

Sams^onite

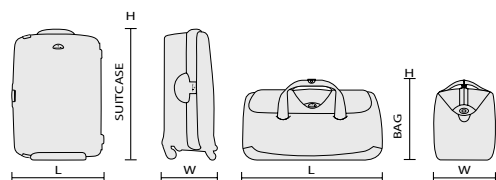


NEW ARRIVALS 2022

GENERAL INFO

Measurements

The dimensions shown in the tables are the exterior dimensions (including handles, wheels, bottom glides, side pockets and other external parts).



Measurements of volume, dimensions and weight are carried out in the Samsonite laboratories using procedures whereby tolerances up to 1.5 cm in dimensions and 5 % in weight and volume cannot be excluded.

Samsonite reserves the right to amend the specifications, colours, dimensions and weight of any product without prior warning. Colour deviation may occur due to the printing technique used.

Product Codes

All Samsonite product codes appear as follows: S'Cure Eco Spinner 55:

128014: MODEL CODE S'CURE ECO SPINNER 55

Quality

We deliver the quality. You conduct the test. Every journey. Every day. You might not have given it any thought, but each Samsonite product undergoes the most stringent controls and tests before it goes on the market. Of course, the ultimate test is conducted by you, the customer.



TUMBLE TEST



HANDLE TEST



DROP TEST



WHEEL TEST



ZIPPER TEST



LOCKS TEST

Discover our service after sales website:

Go to **supportandgo.com** to look up a service point, check lock instructions, learn more about the terms & conditions of the warranty, consult FAQ's and find information on parts & service.

Register your Samsonite online and receive exclusive offers, sneak previews, gift ideas, new product announcements and more on **my.samsonite.com**

#MySamsonite



www.samsonite.com



[instagram.com/mysamsonite](https://www.instagram.com/mysamsonite)



[facebook.com/samsoniteofficial](https://www.facebook.com/samsoniteofficial)



[pinterest.com/mysamsonite](https://www.pinterest.com/mysamsonite)



[youtube.com/samsoniteeurope](https://www.youtube.com/samsoniteeurope)



[twitter.com/mysamsonite](https://www.twitter.com/mysamsonite)



[linkedin.com/company/samsonite](https://www.linkedin.com/company/samsonite)



HISTORY

Milestones

Ever since its earliest days, Samsonite has been the most innovative luggage manufacturer in the world. It has led the industry in using new materials and creating new designs. Here are just a few of the luggage landmarks that Samsonite has created over the years, as part of its tradition of innovation.

1910



The Wooden Trunk

Jesse Shwayder, the company's original founder, redesigns the basic wooden trunk with shiny metal studs and corner-pieces making it more eye-catching and "strong enough to stand on."

1941



Streamlite™

In an early use of a new cutting-edge technology, the Streamlite suitcase is clad in a lightweight lithographed paper to create a "rawhide" effect. Its tapered shape is destined to become a classic within the industry.

1958



Silhouette™

The most advanced luggage made up to that time, included a new modern shape with recessed hardware to protect it from the wear and tear of travel.

1962



Classic Attaché

The first ABS Attaché case is created for a new generation of business men. This sleek case soon became emblematic for the early-60s Mad Men-style executive.

1998



Xylem™

Introduction of the first Samsonite suitcase in aluminium. Its matching attaché would go on to play a key supporting role in the James Bond movie "The World Is Not Enough," where it was used to tote bundles of cash around Europe.

2004



Spinner®

Samsonite markets the four-wheel Spinner, which could be steered in any direction and toted right alongside the traveller. This innovation radically improved mobility and convenience for travellers as they navigated their way through modern airports.

2008



Cosmolite®

Samsonite launches Cosmolite as an answer to the market's increasing demand for stronger and lighter suitcases. It was the lightest and strongest Samsonite case yet developed. Its sea shell inspired design became an instant success and the collection went on to win many design awards, including Red Dot Award "Best of the Best."

2015



Neopulse™

With the launch of Neopulse, Samsonite further strengthens its production capacity in Europe. The Made in Europe label, in combination with a strong design and competitive weight advantage are what made this collection an instant commercial success.

1969



Saturn™

As a response to the rising demand of lightweight luggage, Samsonite launches its first Polypropylene suitcase with injection-moulded shells. The Saturn collection was the niftiest iteration of lightness and strength yet.

1974



Silhouette Blue

The introduction of wheels to the Silhouette frame transformed the luggage world for ever. The case was a true revolution in travel comfort and convenience, targetting a new generation of frequent flyers.

1986



Oyster™

Oyster was the first suitcase with a three-point locking system, providing ultimate strength and security. The case was an immediate triumph, with 140.000 bought in its first year, it was the fastest-selling case of all time.

1994



Ziplite™

With Ziplite, Samsonite introduced its first Polypropylene suitcase with a zipper closure, thus combining both the benefits of hardside and softside luggage. Sales took off quickly and the market for hardside suitcases with zippers was born.

2018



Eco Collection

Worldwide, Samsonite launches 23 product lines that are made from recycled Polypropylene or Recyclex™, a fabric made from 100% post-consumer recycled PET plastic bottles.

2019



S'Cure Eco post consumer-waste

S'Cure Eco is the first suitcase on the planet repurposing post-consumer recycled plastic waste. The suitcase's shells are made using recycled Polypropylene from post-consumer household waste, turning a material too valuable to be thrown away into a high-quality functional product.

2020



110 Year Anniversary

Ready for the next chapter: we celebrate our 110 year anniversary with brand new novelty collections.

CONTENTS

HARDSIDE SELECTION			6		
Lite-Box Alu	A111	8			
Lite-Box	7114	10			
C-Lite	A154	12			
C-lite Disney	B555	14			
Proxis	A515	16			
Neopod	C039	18			
Nuon	B434	20			
Ibon	B432	22			
Upscape	C491	24			
StackD	B435	26			
StackD Disney	N C737	28			
Magnum Eco	C024	30			
HARDSIDE DEALER			32		
Lite-Cube DLX	2837	34			
Lite-Cube	2434	36			
Lite-Shock	3160	38			
S'Cure DLX	1475	40			
Hi-Fi	B245	42			
S'Cure Eco	9477	44			
S'Cure Eco	9477	46			
S'Cure	1103	48			
SOFTSIDE SELECTION			50		
Spectrolite 3.0 TRVL	B670	52			
D'Lite	B739	54			
Respark	C528	56			
Citybeat	A760	60			
SOFTSIDE DEALER			62		
Airea	B359	64			
Popsoda	A211	66			
Base Boost	7104	68			
CASUAL SELECTION			70		
Ecodiver	C192	72			
Roader	C520	76			
CASUAL DEALER			80		
Midtown	5339	82			
BUSINESS & BAGS SELECTION			84		
Spectrolite 3.0	B656	86			
Biz2Go	C376	88			
Securipak	A745	90			
Securipak S	A844	92			
BUSINESS & BAGS DEALER			94		
Pro-DLX 5	8636	96			
Openroad 2.0	B650	100			
Vectura EVO	A202	102			
XBR	6715	104			
StackD Biz	C294	108			
Litepoint	B441	110			
Mysight	B514	112			
Guardit 2.0	9458	114			
Network 4	C410	116			
HIP-Square	8136	118			
Airglow Sleeves	5405	119			
Zalia 2.0	A770	120			
Openroad Chic 2.0	B997	122			
Workationist	C431	124			
Be-Her	N C811	126			
Eco Wave	A884	128			
Ongoing	N C815	130			
Guardit Classy	B999	132			
Move 4.0	N C813	134			

KIDS & LICENSES**136**

Dream Rider	9185	138
Happy Sammies Eco	B100	140
Happy Sammies	8241	144
MARVEL Ultimate 2.0 - Spider-Man	8744	146
Dream Rider MARVEL - Spider-Man	9186	147
Disney Ultimate 2.0 - Mickey and Donald Stars	8744	148
Dream Rider Disney - Mickey and Donald Stars	9186	149
Disney Ultimate 2.0 - Minnie Glitter	8744	150
Dream Rider Disney - Minnie Glitter	9186	151
Disney Ultimate 2.0 - Frozen	N 8744	152

UMBRELLAS**154**

Alu Drop S	9061	156
Rain Pro	1999	158
Wood Classic S	9063	160

ACCESSORIES**162**

Pack-sized	N 9467	164
GLOBAL TRAVEL ACCESSORIES		
Luggage Accessories	9467	166
Packing Accessories	9467	168
Comfort Travelling	9467	170
Electronic Accessories	9467	172

TOILET KITS**173**

C-Lite Toilet Kit	C428	174
Respark Toilet Kit	N D008	176
Cosmix	7286	178
Stackd Toilet Kit	C430	180

LEATHER GOODS**182**

Alu Fit	A865	184
Attack 2 SLG	A246	186
Pro-DLX 6 SLG	N C823	190
Veggy SLG	N C824	194
Flagged SLG	N C043	196

OVERVIEW**198****GENERAL INFO****206**

LITE-BOX ALU		8
LITE-BOX		10
C-LITE		12
C-LITE DISNEY		14
PROXIS		16
NEOPOD		18
NUON		20
IBON		22
UPSCAPE		24
STACKD		26
STACKD DISNEY	NEW	28
MAGNUM ECO		30



LITE-BOX ALU™

A111

Style and performance reach new heights thanks to Lite-Box Alu's robust, yet refined aluminium shells and superior features.

- Premium-quality anodised aluminium
- Each dent or scratch tells your unique travel experience
- Spacious interior with small pockets, packing straps and floating divider pads to compress your belongings carefully



Aluminium
1004



Black
1041



NEW

Gradient Copper
9912

LIMITED
10
year
WARRANTY



Samsonite-branded locks with integrated TSA* function



Emboss your initials on the personalisation tag



Smooth-rolling double wheels with ball bearing reduce noise





Samsonite Lite...



Selection

HARDSIDE



122705

Spinner 55

40 x 55 x 23

40 l

4.7 kg

abc



122706

Spinner 69

47 x 69 x 27

71 l

5.9 kg

abc



122707

Spinner 76

51 x 76 x 28

91 l

6.6 kg

abc



132693

Trunk 74

41 x 74 x 37

93 l

6.5 kg

abc



132694

Trunk 80

41 x 80 x 37

106 l

6.8 kg

abc

The contemporary boxy Lite-Box design with corner protections will surpass your expectations on lightness and strength.

- Made with CURV® material*: extremely strong, incredibly light
- Made in Europe
- Voluminous and boxy design
- Silver detailing
- Both compartments have a divider pad in premium lining and removable cross ribbons



Black
1041



Deep Blue
1277



Eclipse Grey
2957



NEW
Camo/Green
2984



LIMITED
10
year
WARRANTY



Eye-catching corners add strength in the right places



Double tube pull handle (elongated on check-in sizes)



Smooth-rolling double wheels enable optimum manoeuvrability





Lite-Box



Selection

HARDSIDE



79297

Spinner 55

40 x 55 x 20

38 l

2.2 kg

abc



79299

Spinner 69

46 x 69 x 27

75 l

2.8 kg

abc



79300

Spinner 75

50 x 75 x 29

98 l

3.1 kg

abc



79301

Spinner 81

53 x 81 x 31

124 l

3.5 kg

abc

The iconic design of C-Lite guarantees incredible lightness and top-notch comfort, taking your travel experience to the next level.

- Made with CURV® material: extremely strong, incredibly light
- Made in Europe
- Interior lining made out of Recyclex™, a textile engineered from post-consumer recycled PET plastic bottles
- Wide range of sizes including Spinner 55 EXP and Spinner 86

MATCHES

C-LITE TOILET KIT P. 174



Off White
1627



Black
1041



Midnight Blue
1549



Chili Red
1198



Deep Blue
1277

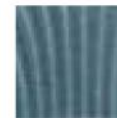


Metallic Green
1542



NEW

Walnut
1902



NEW

Ice Blue
1432

LIMITED
10
year
WARRANTY



RECYCLEX®



Silent and smooth-rolling double wheels



Integrated USB port on cabins, incl. power bank pouch in the interior



Double tube pull handles, elongated on check-in, with integrated ID tag



reddot design award
best of the best 2010



Samsonite C-Lite...



RECYCLED PAPER BOTTLE

Selection

HARDSIDE



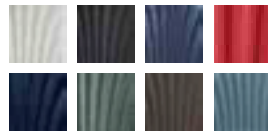
122859
Spinner 55

	40 x 55 x 20					
	36 l					
	1.9 kg					
						abc



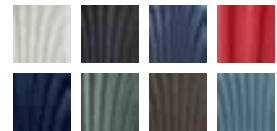
134679
Spinner 55 EXP

	40 x 55 x 20/23					
	36/42 l					
	2.1 kg					
						abc



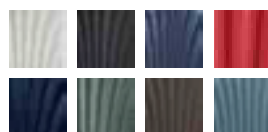
122860
Spinner 69

	46 x 69 x 29				
	68 l				
	2.5 kg				
					abc



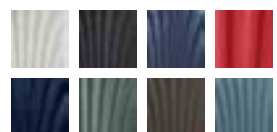
122861
Spinner 75

	51 x 75 x 31				
	94 l				
	2.8 kg				
					abc



122862
Spinner 81

	55 x 81 x 34				
	123 l				
	3.1 kg				
					abc



122863
Spinner 86

	58 x 86 x 36				
	144 l				
	3.6 kg				
					abc

Take a trip down memory lane. Spot your favourite Mickey Mouse poster on the Iconic C-Lite Disney and be on trend with this nostalgic and vintage Mickey print.

- Made with Curv® material: extremely strong, incredibly light
- Made in Europe
- Interior lining made out of Recyclax™, a textile engineered from post-consumer recycled PET plastic bottles
- Printed Disney concept with vintage Mickey Mouse



Vintage Mickey
9879



LIMITED
10 year
WARRANTY



RECYCLAX

Silent and smooth-rolling double wheels



Integrated USB port on cabins, incl. power bank pouch in the interior



Double tube pull handles, elongated on check-in, with integrated ID tag



reddot design award
best of the best 2010



144379

Spinner 55 EXP Disney

	40 x 55 x 20/23
	36/42 l
	2.1 kg

TSA abc



135802

Spinner 69 Disney

	46 x 69 x 29
	68 l
	2.5 kg

TSA abc



135803

Spinner 75 Disney

	51 x 75 x 31
	94 l
	2.8 kg

TSA abc

Unlock a new era of high-performance travelling with Proxis. Innovative design, built to last and fully equipped, for a resilient future.

- Made from Roxkin™, the multi-layered material that instinctively bounces back into shape and offers remarkable strength and lightness (developed by Samsonite)
- Made in Europe
- Includes Samsonite wecare, a new and unique service plan that accompanies you during the product lifetime
- Discover more on our WECARE page by scanning the qr code



Silver
1776



Petrol Blue
1686



Black
1041



Honey Gold
6856



Matt Climbing Ivy
9781

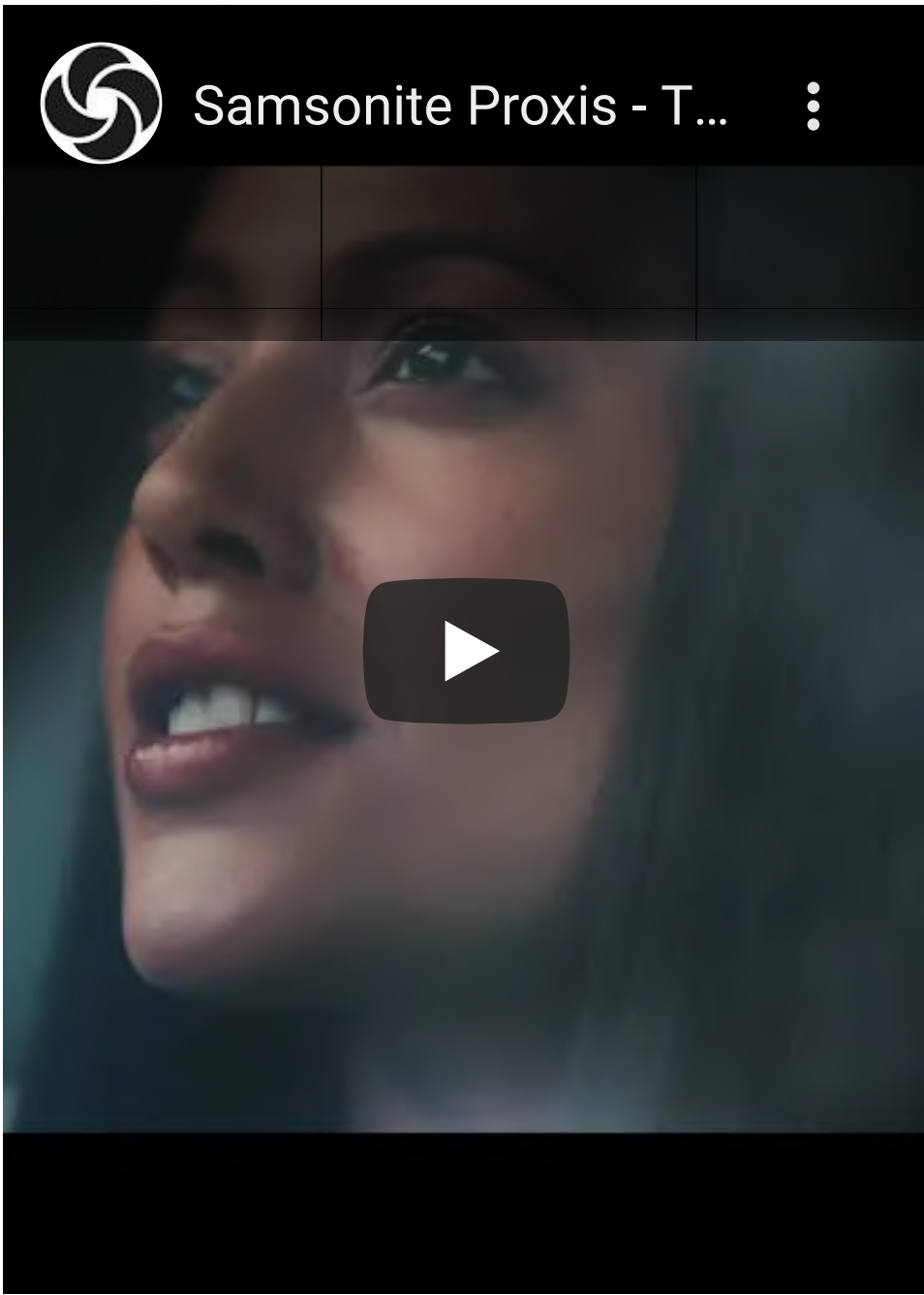


Matt Graphite
4804

LIMITED
10 year
WARRANTY



Samsonite
wecare



Integrated USB port and expandability on cabin sizes



Emboss your initials on the personalisation tag



Double tube pull handle, elongated on check-in sizes, with integrated ID tag





Samsonite...
HARDSIDE



Selection

HARDSIDE



126035

Spinner 55 EXP

40 x 55 x 20/23

38/44 l

2.2 kg



140087

**Spinner 55 EXP
Length 35 cm**

35 x 55 x 23/26

38/44 l

2.1 kg



126041

Spinner 69

48 x 69 x 29

75 l

2.7 kg



126042

Spinner 75

51 x 75 x 31

98 l

2.9 kg



126043

Spinner 81

57 x 81 x 32

125 l

3.5 kg



Travel with ease and in style with Neopod. Each cabin luggage is designed to perfection while offering unique and smart easy access solutions surpassing your needs in our fast-paced world.

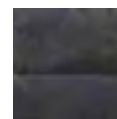
- Made from premium, lightweight Polycarbonate with scratch resistant finishing, premium PU and recycled PET fabric
- Hidden expandability
- TSA008 lock for extra security, closing each compartment separately
- Practical packing thanks to divider pads, multiple pockets including wet pocket and packing straps
- Removable and washable interior lining



Black
1041



Midnight Blue
1549



Camo Black
5046

LIMITED
5
year
WARRANTY



RECYCLEX



Easy access front pocket for all your essentials like laptop, tablet, ...



Slide out pouch with multiple pockets and integrated USB A & C port



Suspension wheels reduce noise and vibrations





139874

**Spinner 55 EXP
Easy Access**

	40 x 55 x 23/27
	41/48 l
	3.3 kg
	26.7 cm/10.5" - 26.6 x 18.3 x 1.5 cm
	39.6 cm/15.6" - 37.5 x 25.9 x 2.8 cm



139872

**Spinner 55 EXP
Slide Out Pouch**

	40 x 55 x 20/23
	38/44 l
	2.8 kg



Nuon, designed for perfection and formed for functionality.

- Contemporary, boxy design with distinctive detailing
- Made from premium-quality, lightweight Polycarbonate (only 3.6 kg for Spinner 75 cm)
- High packing capacity and expandability of 3 cm (hidden expansion on cabin, regular on check in models)
- Practical packing thanks to the divider pad, removable divider pad with large pocket and compression straps. Extra pocket for power bank on the cabin
- Removable and hand-washable interior lining
- Interior lining made from recycled PET plastic bottles (Recyclex™)



Metallic Red
1544



Matt Silver
4052



Matt Graphite
4804



Metallic Dark Blue
9015



NEW

Metallic White
9913



NEW

Matt Petrol Blue
9914

LIMITED
5
year
WARRANTY



RECYCLEX™



Anti-theft security zipper



TSA008 lock for extra security, with integrated USB A & C port on cabin



Suspension wheels reduce noise and vibrations



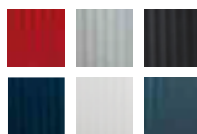


Samsonite ...



Selection

HARDSIDE



134399

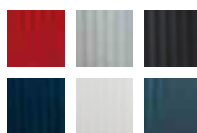
Spinner 55 EXP

40 x 55 x 20/23

38/42 l

2.5 kg

abc



134400

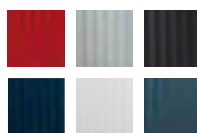
Spinner 69 EXP

45 x 69 x 28/31

79/86 l

3.2 kg

abc



134402

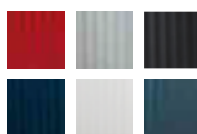
Spinner 75 EXP

49 x 75 x 30/33

100/110 l

3.6 kg

abc



134403

Spinner 81 EXP

53 x 81 x 31/34

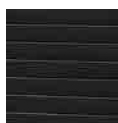
125/137 l

3.9 kg

abc

Ibon, the perfect blend between innovation and outstanding design, sets new standards thanks to the one-point lock opening, multiple carry handles and innovative interior.

- Made from Polypropylene with scratch resistant textures: strong and robust
- Multiple carry handles to ensure optimal ergonomics
- Practical and compressible interior. Small packing footprint fitting tiny spaces
- Interior lining made from recycled PET plastic bottles (Recyclex™)



Black
1041



Dark Blue
1247



Off White
1627



NEW

Yellow
1924



LIMITED
5
year
WARRANTY



RECYCLEX™

Secure one-point closing lock with integrated TSA function



Suspension wheels reduce noise and vibrations



Interior with click and compress divider system and carry handle





Samsonite Ibon...



Selection

HARDSIDE



134382

Spinner 76

	50 x 76 x 32
	102 l
	4.9 kg

Meet Upscape, a lightweight statement designed for you. Enjoy carefree travel thanks to expandability, suspension wheels and a featured and hand washable interior.

- Made from robust & scratch resistant Polypropylene
- Ultra light: only 3.4 kg for Spinner 75 EXP
- TSA008 lock for extra security, with integrated USB A & C port on cabin
- Practical packing thanks to divider pad with 2 pockets and compression packing straps
- Double tube pull handle with integrated ID tag
- Interior lining made from recycled PET plastic bottles (Recyclex™)



Black
1041



Blue Nights
2165



Yellow
1924



Climbing Ivy
9199



Warm Neutral
9559



Removable and hand-washable interior lining



Suspension wheels reduce noise and vibrations



Expandability, up to 12L extra volume





143108

Spinner 55 EXP

	40 x 55 x 20/23
	39/45 l
	2.3 kg



143109

Spinner 68 EXP

	47 x 68 x 28/31
	75/83 l
	3.0 kg



143110

Spinner 75 EXP

	51 x 75 x 30/33
	104/114 l
	3.4 kg



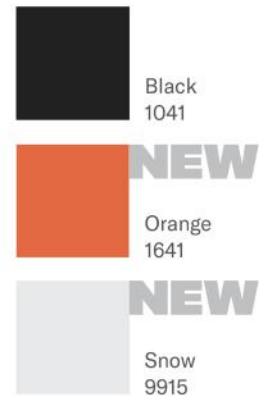
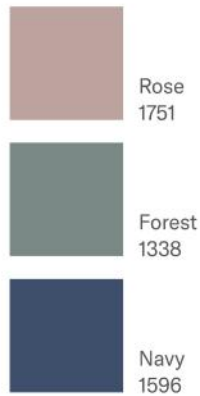
143111

Spinner 81 EXP

	54 x 81 x 34/37
	133/145 l
	3.9 kg

StackD, designed for the modern traveller and engineered to make journeys effortless thanks to high-quality materials and components.

- Made of durable Polycarbonate
- Hidden expandability on cabins
- Matte shells with high scratch resistance
- Practical, modern interior includes divider pad, compression straps and pockets
- Interior lining made from recycled PET plastic bottles (Recyclex™)



MATCHES

STACKD BIZ P. 108 AND STACKD TOILET KIT P. 180



Integrated USB port on cabin sizes, incl. power bank pouch in the interior



Integrated hook for personal belongings



Easy-access cabin includes laptop and tablet compartment





134638
Spinner 55 EXP

	40 x 55 x 20/23
	35/42 l
	2.8 kg



135418
Spinner 55 EXP Easy Access

	40 x 55 x 23/26
	39/46 l
	3.1 kg
	26.7 cm/10.5" - 26.6 x 18.3 x 1.5 cm
	39.6 cm/15.6" - 37.5 x 25.9 x 2.8 cm



134639
Spinner 68

	46 x 68 x 28
	71 l
	3.7 kg



134640
Spinner 75

	50 x 75 x 30
	96 l
	4.3 kg



134641
Spinner 81

	54 x 81 x 33
	126 l
	4.9 kg

Stand out with Stackd Disney thanks to the head-turning design, high-quality materials and great features. Channel your inner Minnie Mouse on your next adventure!

- Made of durable Polycarbonate
- Hidden expandability
- Matte shell with high scratch resistance
- Practical, modern interior includes divider pad, compression straps and pockets
- Double tube pull handle with integrated ID tag
- Interior lining made from recycled PET plastic bottles (Recyclex™)



Minnie Bow
5424



144132

Spinner 55 EXP Disney

	40 x 55 x 20/23
	35/42 l
	2.8 kg

Integrated USB port on cabins, incl. power bank pouch in the interior



Integrated hook for personal belongings



Beautiful Mouse detailing on exterior and interior



STACKD DISNEY™

Explore our amazing and vibrant world with Stackd Black Panther. Perfect balance between design and comfort thanks to the practical features and high-quality materials. Adventure guaranteed!

- Made of durable Polycarbonate
- Hidden expandability
- Matte shell with high scratch resistance
- Practical, modern interior includes divider pad, compression straps and pockets
- Double tube pull handle with integrated ID tag
- Interior lining made from recycled PET plastic bottles (Recyclax™)
- Beautiful Black Panther patch on the interior



146191

Spinner 55 EXP MARVEL

 40 x 55 x 20/23

 35/42 l

 2.8 kg





NEW

Black Panther
A020

LIMITED
5 year
WARRANTY



RECYCLEX™

Integrated USB port on cabins,
incl. power bank pouch in the
interior



Integrated hook for personal
belongings



Beautiful Black Panther detailing
on exterior and interior

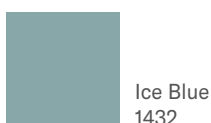
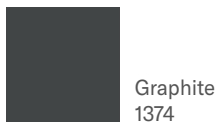
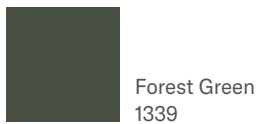
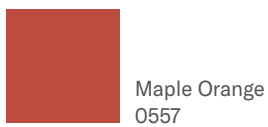


MAGNUM ECO™

C024

Our responsible journey in the spotlight! Magnum Eco reduces waste while offering top notch security, lightness and high packing capacity.

- Made in Europe
- Shells made using recycled Polypropylene from post-consumer waste
- Interior lining made from recycled PET plastic bottles (Recyclex™)
- Extraordinary light and high packing capacity: only 4.2kg for Spinner 75



Secure and easy to use 3-point locking system with integrated TSA lock



Practical interior with two height adjustable divider pads and pocket



Perfect component integration: double wheels, ID tag, ...





Samsonite ...



Selection

HARDSIDE



139845

Spinner 55

40 x 55 x 20

38 l

2.6 kg

abc



139846

Spinner 69

48 x 69 x 30

82 l

3.8 kg

abc



139847

Spinner 75

51 x 75 x 32

104 l

4.2 kg

abc



139848

Spinner 81

55 x 81 x 36

139 l

4.6 kg

abc

LITE-CUBE DLX	34
LITE-CUBE	36
LITE-SHOCK	38
S'CURE DLX	40
HI-FI	42
S'CURE ECO	44
S'CURE ECO	46
S'CURE	48



LITE-CUBE DLX™

2837

A first-class travel experience thanks to the premium leather details and superior features of the Lite-Cube DLX.

- Made with CURV® material: extremely strong, incredibly light
- Made in Europe
- Fully-featured interior including floating divider, laundry bag, the cabin size has an extra removable wet pocket



Aluminium
1004



Midnight Blue
1549



LIMITED
10 year
WARRANTY



Leather soft touch handles and details



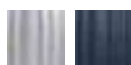
Unique metallised finishing on the Aluminium colour



Ultra silent, smooth-rolling wheels



reddot award 2016
winner

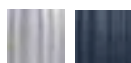


61242

Spinner 55

	40 x 55 x 20
	36.5 l
	2.3 kg

TSA abc

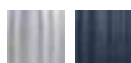


61243

Spinner 68

	45 x 68 x 28.5
	67.5 l
	2.9 kg

TSA abc



61244

Spinner 76

	50 x 76 x 32
	96 l
	3.2 kg

TSA abc



61245

Spinner 82

	54.5 x 82 x 34.5
	122 l
	3.6 kg

TSA abc

Lite-Cube combines timeless style and lightness with contemporary comfort.

- Made with CURV® material: extremely strong, incredibly light
- Made in Europe



Ivory Gold
1173



Graphite
1374



LIMITED
10
year
WARRANTY



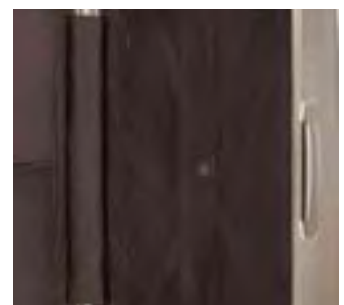
Double wheels for optimum manoeuvrability



Soft touch double tube wheel handle with integrated ID tag



Highly featured interior, made of premium lining



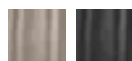


58622

Spinner 55

	40 x 55 x 20
	36.5 l
	2.2 kg

TSA abc

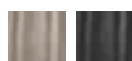


58623

Spinner 68

	45 x 68 x 28.5
	67.5 l
	2.8 kg

TSA abc

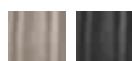


58624

Spinner 76

	50 x 76 x 32
	96 l
	3.1 kg

TSA abc



58625

Spinner 82

	54.5 x 82 x 34.5
	122 l
	3.5 kg

TSA abc

Pushing the limits of innovation, Lite-Shock is our lightest hardside with maximum impact resistance.

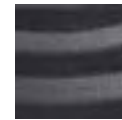
- Made with CURV® material: extremely strong, incredibly light
- Made in Europe
- Lightweight and shock-absorbing shell design: only 2.5 kg for Spinner 75
- Functional, lightweight interior



Sand
1775



Petrol Blue
1686



Black
1041

LIMITED
10 year
WARRANTY



Shock-absorbing corners give extra strength



Single tube wheel handle with integrated ID tag



Innovative one-slot lock to secure your belongings



reddot design award
winner 2015



62764

Spinner 55

	40 x 55 x 20
--	--------------

	36 l
--	------

	1.7 kg
--	--------

TSA abc



62765

Spinner 69

	47 x 69 x 29
--	--------------

	73 l
--	------

	2.3 kg
--	--------

TSA abc



62766

Spinner 75

	51.5 x 75 x 31
--	----------------

	98.5 l
--	--------

	2.5 kg
--	--------

TSA abc



62767

Spinner 81

	55 x 81 x 33
--	--------------

	124 l
--	-------

	2.8 kg
--	--------

TSA abc




S'CURE DLX™

Until stock depletion

1475

S'Cure DLX perfectly combines top-notch security with rich chrome or gold detailing and a highly featured interior.

- Made in Europe
- Polypropylene: strong and robust
- Featured interior: height-adjustable packing system (except on Spinner 55), multiple pockets, garment sleeve, wet pocket and much more

	Black/ Gold Delusious 7246
	Midnight Blue 1549
	Graphite 1374



Secure and practical 3-point locking closure



Striking colours with premium chrome or gold finishing



Double tube pull handle and double wheels for optimal comfort





50919

Spinner 55

40 x 55 x 20

34 l

2.9 kg



50917

Spinner 69

49 x 69 x 29

79 l

4.1 kg



50918

Spinner 75

52 x 75 x 31

102 l

4.5 kg



59237

Spinner 81

55 x 81 x 35

138 l

5.0 kg



Travel even lighter with Hi-Fi. The modern design is paired with hidden expandability, a washable interior and suspension wheels.

- Made of Polypropylene: durable and resistant
- Ultra light: only 3.4 kg for Spinner 75 EXP
- Colour-matching components
- Featured, removable and hand-washable interior: divider pad with pockets and lowered cross ribbons



Black
1041



Dark Blue
1247



Red
1726



Petrol Blue
1686



LIMITED
5
year
WARRANTY



Suspension wheels reduce noise and vibrations



Water-repellent coated zipper with kissing slider pullers



Hidden expandability for extra packing capacity





Samsonite tra...



HARDSIDE



132800

Spinner 55 EXP

40 x 55 x 20/23

39/45 l

2.3 kg



132801

Spinner 68 EXP

46 x 68 x 26/29

73/81 l

3.0 kg



132802

Spinner 75 EXP

50 x 75 x 28/31

100/110 l

3.4 kg



132803

Spinner 81 EXP

54 x 81 x 32/35

119/131 l

4.0 kg



S'Cure Eco, the first collection made out of circular Polypropylene created from post-consumer waste. Sustainable yet stylish!

- Made in Europe
- Constructed out of high-quality recycled materials
- Shells made using recycled Polypropylene from post-consumer packaging
- Interior lining made from recycled PET plastic bottles (Recyclex™)



Navy Blue
1598



Forest Grey
5587

LIMITED
5
year
WARRANTY



RECYCLEX™



Double tube pull handle and double wheels for optimal comfort



Secure and easy to use 3-point locking system



Seal to limit moisture penetration






128014

Spinner 55
Post Consumer

 40 x 55 x 20

 34 l

 2.9 kg



128015

Spinner 69
Post Consumer

 49 x 69 x 29


 79 l

 4.2 kg




128016

Spinner 75
Post Consumer

 52 x 75 x 31

 102 l

 4.6 kg



135147

Spinner 81
Post Consumer

 55 x 81 x 35

 138 l

 5.0 kg



The S'Cure Eco fits perfectly within Samsonite's philosophy to reduce and recycle waste whilst creating secure and robust products.

- Made in Europe
- Shells constructed out of a minimum of 85 % recycled Polypropylene (waste from Samsonite's own production process)
- Interior lining made from recycled PET plastic bottles (Recyclex™)



Eco Black
L470

LIMITED
5
year
WARRANTY



RECYCLEX™



Logo and ID tag enriched with recycled wood waste



Top carry handle with recycled wood fibre, except on the cabin



3-point locking closure provides extra security





115722

Spinner 55

	40 x 55 x 20
	34 l
	2.9 kg



115723

Spinner 69

	49 x 69 x 29
	79 l
	4.2 kg



115724

Spinner 75

	52 x 75 x 31
	102 l
	4.6 kg



115725

Spinner 81

	55 x 81 x 35
	138 l
	5.0 kg



Lightweight, robust and secure 3-point locking. S'Cure is the perfect reliable travel companion.

- Made in Europe
- Lightweight and robust Polypropylene
- 3-point locking for extra security
- Seal to limit moisture penetration
- Practical interior including covered cross ribbons, zipped divider pad and large side pocket



Silver
1776



Dark Blue
1247



Crimson Red
1235



Black
1041



Aqua Blue
1012

LIMITED
5 year
WARRANTY



Made with
flowlite®



Secure 3-point locking closure providing extra security



Double tube pull handle and double wheels for optimal comfort



Seal to limit moisture penetration





49539

Spinner 55

	40 x 55 x 20
	34 l
	2.9 kg



49307

Spinner 69

	49 x 69 x 29
	79 l
	4.2 kg



49308

Spinner 75

	52 x 75 x 31
	102 l
	4.6 kg



59244

Spinner 81

	55 x 81 x 35
	138 l
	5.0 kg



SPECTROLITE 3.0 TRVL

D'LITE

RESPARK

CITYBEAT

52

54

56

60



SPECTROLITE 3.0 TRVL™

B670

Spectrolite 3.0 TRVL gives the answer to the new generation of business travel. The collection brings durability and security to the highest level, while meeting all needs of frequent business travellers.

- Modern, tech-inspired design, in perfect match with Spectrolite 3.0 Business bags
- Smart business organisation on all cabins, including USB A & C port, powerbank pouch and laptop/tablet sleeve
- Integrated TSA cable lock and secure double coil zipper on main compartment
- Compressible floating divider, including shoe, wet and zipped pocket, ensuring a comfortable packing experience

MATCHES

SPECTROLITE 3.0™ P. 86



Black
1041



Deep Blue
1277



NEW

Climbing Ivy
9199



RECYCLEX

Durable suspension wheels



Expandability



Smart business organisation





137350
Garment Sleeve

	54 x 54/105 x 5
	0.01 l
	0.94 kg



LIMITED 5 year WARRANTY

137340
Upright 55 EXP

	40 x 55 x 23/27
	41.5/47 l
	2.8 kg
	26.7 cm/10.5" - 26.6 x 18.3 x 1.5 cm
	39.6 cm/15.6" - 37.5 x 25.9 x 2.8 cm



LIMITED 5 year WARRANTY

137342
Spinner 55

	40 x 55 x 20
	40 l
	2.6 kg
	26.7 cm/10.5" - 26.6 x 18.3 x 1.5 cm
	39.6 cm/15.6" - 37.5 x 25.9 x 2.8 cm



LIMITED 5 year WARRANTY

137344
Spinner 55 EXP DF

	40 x 55 x 23/27
	40/47 l
	3.0 kg
	26.7 cm/10.5" - 26.6 x 18.3 x 1.5 cm
	39.6 cm/15.6" - 37.5 x 25.9 x 2.8 cm



LIMITED 5 year WARRANTY

137346
Spinner 68 EXP

	44 x 68 x 28/32
	80/87 l
	3.4 kg
	26.7 cm/10.5" - 26.6 x 18.3 x 1.5 cm
	39.6 cm/15.6" - 37.5 x 25.9 x 2.8 cm



LIMITED 5 year WARRANTY

137347
Spinner 78 EXP

	49 x 78 x 31/35
	112/121 l
	3.9 kg
	26.7 cm/10.5" - 26.6 x 18.3 x 1.5 cm
	39.6 cm/15.6" - 37.5 x 25.9 x 2.8 cm

Lightweight and designed for the finest comfort-on-the go, enlighten yourself with our D'Lite collection.

- A true lightweight icon at 1.9 kg for the Spinner 55 cm, featuring a laptop sleeve 15.6" and removable wet pouch on all cabins
- Providing the greatest comfort with its renowned bridge top handle, suspension wheels and vertical webbing interior straps
- Various range of check-in sizes including all expandability, to answer your individual packing needs
- Broad and elegant colour palette matching perfectly with the C-Lite collection



Black
1041



Midnight Blue
1549



Chili Red
1198



Climbing Ivy
9199



Bright Orange
2525



NEW

Petrol Grey
6325



recycleX™



Easy-access U-shape pocket & laptop sleeve 15.6"



RecycleX™ interior fabric



Durable double suspension wheels





137234

Beauty Case

36 x 26 x 19

15 l

0.6 kg



137228

Upright 55 EXP

40 x 55 x 22/25

40/45 l

2 kg

39.6 cm/15.6" - 37.5 x 25.9 x 2.8 cm



137229

Spinner 55 EXP

40 x 55 x 22/25

39/44 l

2 kg

39.6 cm/15.6" - 37.5 x 25.9 x 2.8 cm



139942

Spinner 55

40 x 55 x 20

40 l

1.9 kg

39.6 cm/15.6" - 37.5 x 25.9 x 2.8 cm



137230

Spinner 63 EXP

42 x 63 x 26/29

60/65 l

2.3 kg



137231

Spinner 71 EXP

46 x 71 x 29/32

85/91 l

2.6 kg



137232

Spinner 78 EXP

49 x 78 x 31/34

107/118 l

3 kg



137233

Spinner 83 EXP

54 x 83 x 34/37

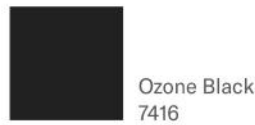
145/155 l

3.2 kg



The Respark collection is our sustainable and durable travel solution, designed with a high focus on volume and practicality.

- All-in offer of trusted duffles, bags, cabins and check-in spinners
- Exterior and interior fabrics made out of post-consumer recycled PET bottles, part of our RecycleX™ Material Technology Initiative
- High packing capacity and expandability on multiple models
- Practical and secure: corner protection, extra high wheel housings, PU back protection and kickplate
- Double suspension wheels on spinner models



MATCHES

RESPARK TOILET KIT P. 176



Chunky 10 mm zipper tapes on check-in models and secure TSA cable lock

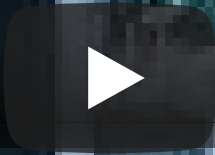


C-shape front compartment for quick and flexible packing



Personalisation loop



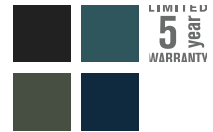


143311

Upright 45 Underseater



	35 x 45 x 20
	29 l
	1.8 kg
	26.7 cm/10.5" - 26.6 x 18.3 x 1.5 cm
	39.6 cm/15.6" - 37.5 x 25.9 x 2.8 cm



143312

Upright 55 EXP



	40 x 55 x 23/27
	48/57 l
	2.5 kg
	39.6 cm/15.6" - 37.5 x 25.9 x 2.8 cm

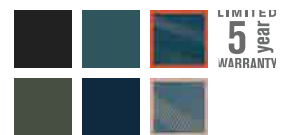


143325

Spinner 55 Length 35 EXP



	35 x 55 x 22/25
	39/44 l
	2.5 kg
	39.6 cm/15.6" - 37.5 x 25.9 x 2.8 cm



143328

Spinner 55 Strict



	40 x 55 x 20
	43 l
	2.4 kg
	39.6 cm/15.6" - 37.5 x 25.9 x 2.8 cm







LIMITED
5 year
WARRANTY

143329
Spinner 55 DF EXP

	40 x 55 x 23/27
	43/49 l
	3 kg
	39.6 cm/15.6" - 37.5 x 25.9 x 2.8 cm



abc





LIMITED
5 year
WARRANTY

143330
Spinner 67 EXP

	43 x 67 x 29/33
	82/92 l
	3.2 kg



abc





LIMITED
5 year
WARRANTY

143331
Spinner 79 EXP

	48 x 79 x 31/35
	124/140 l
	3.6 kg



abc





LIMITED
5 year
WARRANTY

143332
Spinner 82 EXP

	53 x 82 x 34/38
	156/170 l
	4 kg



abc



143333

Garment Bag Tri-Fold

57 x 36 x 17

62 l

1.7 kg



143334

Laptop Shoulder Bag

45 x 33 x 14

24 l

0.7 kg

39.6 cm/15.6" - 37.5 x 25.9 x 2.8 cm



143335

Duffle 48 Overnighter

48 x 35 x 24

36.5 l

0.7 kg



143336

Duffle 55 Twonighter

55 x 33 x 30

54 l

0.7 kg



Inspired by the beats of the dynamic city life, Citybeat is designed for everyone who appreciates simplicity, performance and all-in-one style at a great price.

- Its overall contemporary design, along with the webbing logo strap and metal detailing help it stand out on the conveyor belt
- Broad and lightweight assortment starting at 2 kg for the Spinner 55



Black
1041



Navy Blue
1598



Red
1726



NEW

Climbing Ivy
9199



NEW

Burnt Henna
D262



LIMITED
5
year
WARRANTY



Eye for detail: webbing logo strap and pleat caps



TSA lock on all sizes for secure and stress-free travel



Secure corner protection on all items





128828
Upright 55

	40 x 55 x 20
	42 l
	2 kg



128829
**Spinner 55
Length 35 cm**

	35 x 55 x 20
	35 l
	2 kg



128830
**Spinner 55
Length 40 cm**

	40 x 55 x 20
	42 l
	2 kg



128831
Spinner 66 EXP

	42 x 66 x 28/31
	67/73 l
	2.7 kg



128832
Spinner 78 EXP

	47 x 78 x 30/33
	105/113 l
	3.1 kg

AIREA
POPSODA
BASE BOOST

64
66
68



Whether you are travelling by airplane, train or car, Airea sets the new standard for travelling light and fashionable.

- Elegant and young design inspired by the built-on pocket trend as seen in fashion
- Lightweight and broad cabin offer as of 1.75 kg for the Spinner 55



Black
1041



Dark Blue
1247



NEW

Deep Red
1285



NEW

Climbing Ivy
9199



Recessed double wheels providing extra capacity



Bespoke material combination with shiny black metal detailing



Hidden expandability on check-in sizes for extra packing capacity









NEW

	
	133627 Beauty case
	 35 x 21 x 19
	 13 l
	 0.4 kg
	

NEW

	
	137151 Toilet kit
	 29 x 17 x 14
	 7.5 l
	 0.3 kg
	

NEW

	
	137153 Duffle 45
	 45 x 26 x 26
	 36 l
	 0.6 kg
	




 LIMITED 5 year WARRANTY

133621
Upright 55 EXP Top Pocket



 40 x 55 x 20/23

 41/46 l

 1.9 kg








 LIMITED 5 year WARRANTY

133622
Spinner 55 EXP Length 35 cm



 35 x 55 x 22/25

 38/43.5 l

 1.8 kg







 LIMITED 5 year WARRANTY

133623
Spinner 55 Strict

 40 x 55 x 20

 41 l

 1.75 kg







 LIMITED 5 year WARRANTY

133625
Spinner 67 EXP


 43 x 67 x 26/30

 73.5/81.5 l

 2.4 kg








 LIMITED 5 year WARRANTY

133626
Spinner 78 EXP

 49 x 78 x 29/33

 111.5/120 l

 2.8 kg



Young, fresh and vibrant are the key vibes that shape our Popsoda collection.

- Energetic, contemporary design with striking colour detail usage
- Popsoda's colour palette comes in 3 fresh standard colours and 2 on-trend seasonal colours



Black
1041



Dark Blue
1247



Teal
2824



NEW

Light Grey
1508



NEW

Orange
1641



LIMITED
5
year
WARRANTY



Expandability on check-in sizes to maximise packing capacity



Striking colour detail usage on the logo, riveting and pullers



Double wheels on spinner items enabling smooth strolling





123535
Upright 55

40 x 55 x 20

41 l

2.2 kg



123537
**Spinner 55
Length 40 cm**

40 x 55 x 20

40 l

2.3 kg



123538
Spinner 66 EXP

44 x 66 x 28/31

68/73.5 l

2.9 kg



123539
Spinner 78 EXP

48 x 78 x 31/34

105/112.5 l

3.3 kg



BASE BOOST™

7104

Base Boost: a range close to the budget-conscious traveller's heart.

- Characterized by core values such as quality, protection and lightness
- Trendy, modern look thanks to the playful take on the dip-dye trend within the same colour hues



Black
1041



Navy Blue
1598



LIMITED
5
year
WARRANTY



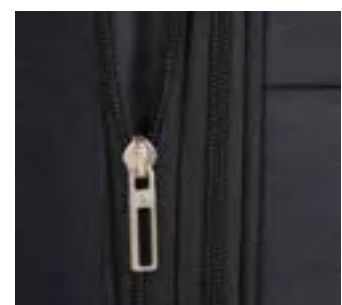
TSA lock on all sizes for secure and stress-free travel



Eye for detail: distinctive logo, pullers and pleat caps



Expandability feature on check-in sizes





79195
Upright 55
Length 40 cm

	40 x 55 x 20
	41 l
	2.0 kg



79200
Spinner 55

	40 x 55 x 20
	39 l
	2.0 kg



85195
Spinner 55
Length 35 cm

	35 x 55 x 20
	35 l
	2.0 kg



79201
Spinner 66 EXP

	44 x 66 x 28/31
	67.5/73.5 l
	2.7 kg



79202
Spinner 78 EXP

	48 x 78 x 31/34
	105/112.5 l
	3.1 kg





Selection



CASUAL
CASUAL
CASUAL
CASUAL
CASUAL
CASUAL
CASUAL
CASUAL
CASUAL
CASUAL
CASUAL
CASUAL
CASUAL
CASUAL
CASUAL

Made to accommodate the new ways of travelling, Ecodiver combines practicality with a stylish design, made from sustainable water-resistant coated fabrics. The collection is developed with special attention to sustainability, security and comfort. With its all-in assortment, including daypacks and travel items, Ecodiver will guide you through the city and long-haul trips.



Black
1041



Blue Nights
2165



Yellow
1924



Climbing Ivy
9199



NEW

Orange
1641

- Iconic multihandles design - including top, bottom side and two front handles
- Eco fabrics made from recycled PET, part of our Recyclex™ Material Technology Initiative
- Safe & secure: reflective logo on all items & TSA lock for the wheeled items
- Full travel comfort: ergonomic double wheel tube and an additional C-shape packing compartment in the front



recyclex™



Water-resistant material



Personalisation loop & compression straps*



Reflective details to improve visibility





Sam...



Selection

CASUAL



140879

Belt Bag



	35 x 16 x 10
	3 l
	0.2 kg



140878

Toilet Kit



	26 x 16 x 13
	4.5 l
	0.2 kg



140809

Laptop Backpack S



	33 x 44 x 16
	16 l
	0.7 kg
	35.6 cm/14" - 34 x 24 x 2.4 cm



140871

Laptop Backpack M



	32 x 45 x 20
	19 l
	0.9 kg
	26.7 cm/10.5" - 26.6 x 18.3 x 1.5 cm
	39.6 cm/15.6" - 37.5 x 25.9 x 2.8 cm



140872

Laptop Backpack L



	35 x 48 x 23
	26 l
	1.0 kg
	26.7 cm/10.5" - 26.6 x 18.3 x 1.5 cm
	43.9 cm/17.3" - 37.5 x 25.9 x 2.8 cm



140874

Urban Laptop Backpack M USB



	31 x 44 x 20
	18 l
	0.8 kg
	26.7 cm/10.5" - 26.6 x 18.3 x 1.5 cm
	39.6 cm/15.6" - 37.5 x 25.9 x 2.8 cm



140880

Duffel/WH 55

40 x 55 x 20

48 l

2.3 kg



140881

Duffel/WH 55 L 35CM DF

35 x 55 x 23

40 l

2.4 kg

39.6 cm/15.6" - 37.5 x 25.9 x 2.8 cm



140882

Duffel/WH 55 Backpack

40 x 55 x 25

51 l

2.5 kg



140883

Duffel/WH 67

43 x 67 x 28

76 l

2.8 kg



140884

Duffel/WH 79

44 x 79 x 31

122 l

3.2 kg



140885

Spinner Duffel 55

40 x 55 x 23

50 l

2.6 kg





Samsonite ...



Selection

CASUAL



140886
Spinner Duffel 79

	47 x 79 x 32			
	117 l			
	3.6 kg			

LIMITED
5 year
WARRANTY



140875
Duffel S



	55 x 24 x 31		
	40 l		
	1.0 kg		



140876
Duffel M

	63 x 29 x 35		
	60 l		
	1.3 kg		



140877
Duffel L



	69 x 36 x 37		
	90 l		
	1.5 kg		
	63 x 29 x 35		
	60 l		
	1.3 kg		



142896
Travel Backpack S 38L

	34 x 54 x 26			
	38 l			
	1.6 kg			
	26.7 cm/10.5" - 26.6 x 18.3 x 1.5 cm			
	43.9cm/17.3" - 42.2 x 28.7 x 3.3cm			



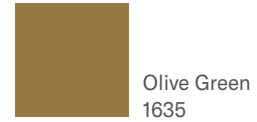
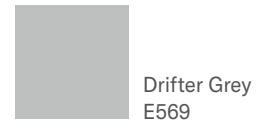
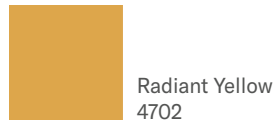
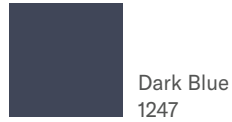
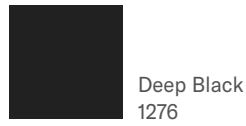
142897
Travel Backpack M 55L



	34 x 61 x 29			
	55 l			
	1.9 kg			
	26.7 cm/10.5" - 26.6 x 18.3 x 1.5 cm			
	43.9cm/17.3" - 42.2 x 28.7 x 3.3cm			

Sleek, versatile and colourful are the key words to describe our latest urban casual collection. Get ready for Roader, our go-to collection for commuting and adventures abroad!

- Secure TSA lock on all wheeled items
- EU Guarantee Cabin size (55*35*23) with compression straps to adjust the volume and laptop sleeve 15.6"
- 3 well featured backpacks, including: laptop 15.6", tablet 10.1" sleeve, water bottle pocket, rain cover, paper sleeve, compression straps, pen holder, etc.
- Exterior fabric and interior lining made from recycled PET bottles, part of our Recyclex™ Material Technology Initiative



Compression straps*



Personalisation loop



Front pocket laptop sleeve*





Samsonite Road

COMPRESSION STRAPS



Selection

CASUAL



143263

Belt Bag



	31 x 12 x 10
	3 l
	0.2 kg



143264

Laptop Backpack S



	30 x 42 x 19
	17 l
	0.6 kg
	26.7 cm/10.5" - 26.6 x 18.3 x 1.5 cm
	35.6 cm/14" - 34 x 24 x 2.4 cm
	abc



143265

Laptop Backpack M



	33 x 44 x 23
	24 l
	0.8 kg
	26.7 cm/10.5" - 26.6 x 18.3 x 1.5 cm
	39.6 cm/15.6" - 37.5 x 25.9 x 2.8 cm
	abc

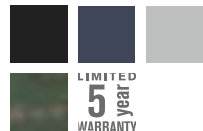


143266

Laptop Backpack L EXP



	35 x 46 x 22/26
	31.5/39.5 l
	1.1 kg
	26.7 cm/10.5" - 26.6 x 18.3 x 1.5 cm
	43.9 cm/17.3" - 42.2 x 28.7 x 3.8 cm
	abc



143267

Laptop BP/WH 55



	39 x 55 x 22
	28 l
	2.3 kg
	26.7 cm/10.5" - 26.6 x 18.3 x 1.5 cm
	43.9 cm/17.3" - 42.2 x 28.7 x 3.8 cm
	abc



144244
Duffle XS

	40 x 25 x 20
	20 l
	0.3 kg



143268
Duffle S

	53 x 32 x 34
	55.5 l
	0.6 kg



143269
Duffle/WH 55 L 35

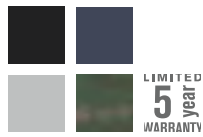
	35 x 55 x 23
	39.5 l
	2.2 kg
	26.7 cm/10.5" - 26.6 x 18.3 x 1.5 cm
	39.6 cm/15.6" - 37.5 x 25.9 x 2.8 cm



143271
Duffle/WH 68

	41 x 68 x 30
	81 l
	2.8 kg





143273
Duffel/WH 79

45 x 79 x 32

112 l

3.1 kg



LIMITED
5
year
WARRANTY

143270
**Spinner Duffel/WH
55 DF**

40 x 55 x 20

39.5 l

2.6 kg

39.6 cm/15.6" -
37.5 x 25.9 x 2.8 cm



abc



143274
Travel Backpack S 38L

33 x 57 x 26

38 l

1.4 kg

26.7 cm/10.5" -
26.6 x 18.3 x 1.5 cm

43.9 cm/17.3" -
42.2 x 28.7 x 3.8 cm



143275
Travel Backpack M 55L

36 x 61 x 28

55 l

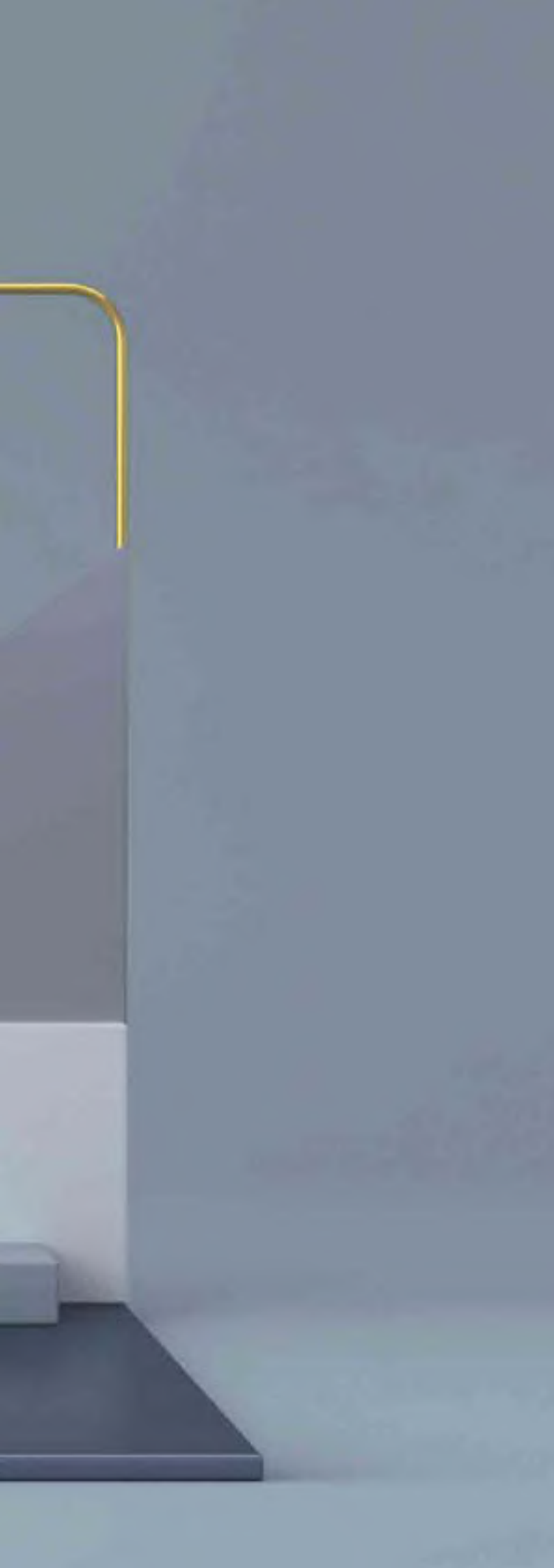
1.5 kg

26.7 cm/10.5" -
26.6 x 18.3 x 1.5 cm

43.9 cm/17.3" -
42.2 x 28.7 x 3.8 cm







CASUAL
CASUAL
CASUAL
CASUAL
CASUAL
CASUAL
CASUAL
CASUAL
CASUAL
CASUAL
CASUAL
CASUAL
CASUAL
CASUAL
CASUAL

Meet Midtown, our urban lifestyle collection, made to cater for all your packing needs and take you through the city from dawn till dusk.

- Lightweight double frame compartment duffles on wheels
- Exterior partially made from recycled PET, part of our Recyclex™ Material Technology Initiative
- Pack your way with the split frame opening and additional front access via the U-shape opening to the main compartment
- Stay secure with the TSA cable lock on all wheeled items



Black
1041



Dark Blue
1247



Camo Grey
L403



recyclex™



PVC
FREE



Practical multiple-handle design, making handling easier



Recyclex™ and water repellent PU coated material combination



TSA cable lock to securely close all pockets





133800
Laptop Backpack S

	30 x 41 x 19
	19 l
	0.5 kg
	26.7 cm/10.5" - 26.6 x 18.3 x 1.5 cm
	35.6 cm/14" - 34 x 24 x 2.4 cm



133803
Laptop Backpack M

	30 x 45 x 21
	23 l
	0.7 kg
	26.7 cm/10.5" - 26.6 x 18.3 x 1.5 cm
	39.6 cm/15.6" - 37.5 x 25.9 x 2.8 cm



133805
Laptop Backpack L EXP

	31 x 45 x 23/25.5
	29/32 l
	0.9 kg
	26.7 cm/10.5" - 26.6 x 18.3 x 1.5 cm
	39.6 cm/15.6" - 37.5 x 25.9 x 2.8 cm



LIMITED 5 year WARRANTY

133849
Duffel/WH 55 Backpack

	40 x 55 x 23
	43 l
	2.6 kg
	26.7 cm/10.5" - 26.6 x 18.3 x 1.5 cm
	39.6 cm/15.6" - 37.5 x 25.9 x 2.8 cm



LIMITED 5 year WARRANTY

133850
Duffel/WH 79

	43 x 79 x 30
	103 l
	3.1 kg



SPECTROLITE 3.0

86

BIZ2GO

88

SECURIPAK

90

SECURIPAK S

92



Selection

BUSINESS
& BAGS

BUSINESS
& BAGS

BUSINESS
& BAGS

**BUSINESS
& BAGS**

BUSINESS
& BAGS

BUSINESS
& BAGS

BUSINESS
& BAGS

BUSINESS
& BAGS

SPECTROLITE 3.0™

B666

With refreshed design and organisation, this line is the benchmark of perfect business companion.

- Organised to improve accessibility and capacity
- Interior lining made from recycled PET bottles, part of our Recyclex™ Material Technology Initiative
- Hygienic removable pouch to safely store your surgery masks (*selected assortment)

MATCHES

SPECTROLITE 3.0 TRVL™ P. 52



Black
1041



Deep Blue
1277



USB port to charge devices
(powerbank sold separately)



Hidden shoulder strap pocket



Water resistant laptop compartment





**SMART SLEEVE
WITH HIDDEN POCKET**



137262

Bailhandle 14.1"



	38 x 27.5 x 11.5
	12 l
	1.1 kg
	26.7 cm/10.5" - 26.6 x 18.3 x 1.5 cm
	35.6 cm/14" - 34 x 24 x 2.4 cm



137256

Laptop Backpack 14.1"*



	28.5 x 41 x 14
	16.5 l
	1.4 kg
	26.7 cm/10.5" - 26.6 x 18.3 x 1.5 cm
	35.6 cm/14" - 34 x 24 x 2.4 cm



137260

Laptop Backpack 17.3" EXP*



	32 x 46 x 16/24
	26.5/30.5 l
	1.6 kg
	26.7 cm/10.5" - 26.6 x 18.3 x 1.5 cm
	43.9 cm/17.3" - 42.2 x 28.7 x 3.8 cm



137267

Tablet Crossover S 7.9"



	15.5 x 22 x 5
	2 l
	0.3 kg
	20.3 cm/8" - 21.6 x 13.5 x 1.4 cm



137263

Bailhandle 15.6" EXP



	42 x 32 x 13/21
	18/22 l
	1.4 kg
	26.7 cm/10.5" - 26.6 x 18.3 x 1.5 cm
	39.6 cm/15.6" - 37.5 x 25.9 x 2.8 cm



137258

Laptop Backpack 15.6" EXP*



	30 x 42.5 x 15/23
	23/26.5 l
	1.5 kg
	26.7 cm/10.5" - 26.6 x 18.3 x 1.5 cm
	39.6 cm/15.6" - 37.5 x 25.9 x 2.8 cm



137268

Rolling Tote 17.3" EXP



	39 x 48.5 x 24.5/32.5
	37.5/42.5 l
	3.5 kg
	26.7 cm/10.5" - 26.6 x 18.3 x 1.5 cm
	43.9 cm/17.3" - 42.2 x 28.7 x 3.8 cm

Believed to be the best business backpack while commuting on 2 wheels. Biz2Go is the perfect integration of the Samsonite Business DNA in terms of quality and organisation mixed with a modern look and up to date details that improve the comfort, the storable space and look.

- Maximised comfort while carrying
- Exterior fabric and interior lining made from recycled PET bottles, part of our Recyclex™ Material Technology Initiative
- USB port



Black
1041



Deep Blue
1277



Earth Green
1316



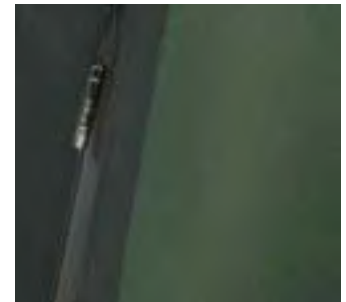
Ink blue
1443



Radiant Yellow
4702



Reflective details to improve visibility

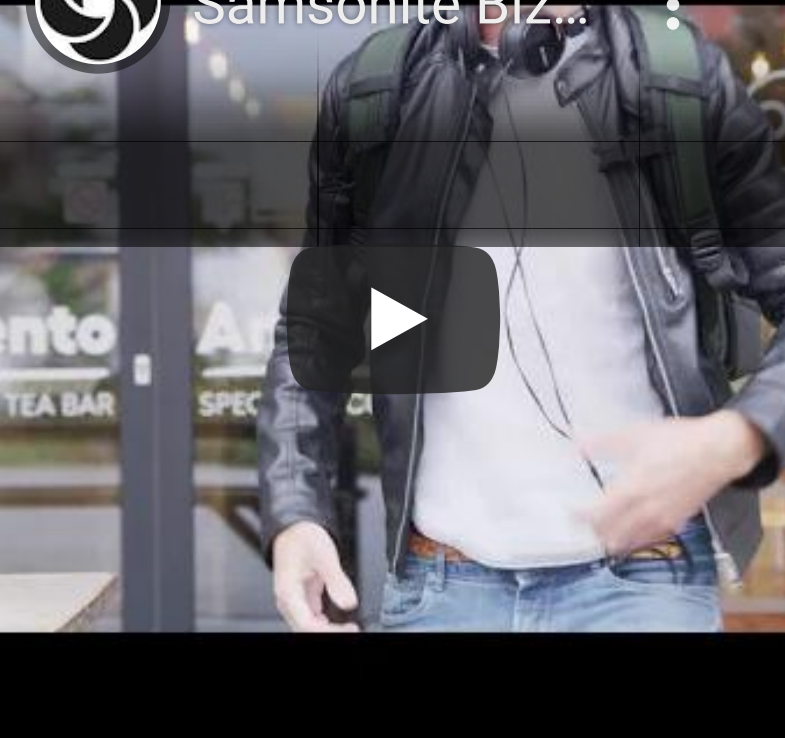


Removable carabiner enriches look and functionality



Ergonomic shock absorbing straps to increase comfort





142140

Waistbag

	39 x 14 x 7.5
	2.5 l
	0.2 kg



142141

Crossover 9.7"



	19 x 24 x 8.5
	4 l
	0.3 kg
	24.5 cm/9.7" - 24 x 17 x 1.3 cm



142142

Laptop Backpack 14.1"



	31 x 21 x 43
	20.5 l
	1 kg
	26.7 cm/10.5" - 26.6 x 18.3 x 1.5 cm
	35.6 cm/14" - 34 x 24 x 2.4 cm



142144

Backpack 15.6" Daytrip



	32 x 21 x 43
	22.5 l
	1.1 kg
	26.7 cm/10.5" - 26.6 x 18.3 x 1.5 cm
	39.6 cm/15.6" - 37.5 x 25.9 x 2.8 cm



142145

Backpack 17.3" EXP Overnight



	33 x 23/25 x 46
	30/35 l
	1.3 kg
	26.7 cm/10.5" - 26.6 x 18.3 x 1.5 cm
	43.9 cm/17.3" - 42.2 x 28.7 x 3.8 cm



The anti-theft collection that mixes comfort of an urban model with several security features.

- Exterior fabric and interior lining made from recycled PET bottles, part of our Recyclex™ Material Technology Initiative
- Cut resistant material layer*
- Reflective details to improve visibility

MATCHES

SECURIPAK S™ P. 92



Black Steel
T061



Eclipse Blue
7769



True Blue
1875



Cool Grey
2447



Sunset Yellow
1843



Garnet Red
1361



NEW
Foliage Green
3869



Hidden pocket with RFID protection*



USB port to charge devices (powerbank sold separately)



Reflective details to improve visibility



reddot winner 2020



Samsonite anti-th...



Selection

BUSINESS & BAGS

ANTI THEFT DESIGN



140563

Waistbag

	34.5 x 14 x 5.5
	1.6 l
	0.15 kg



128822

Laptop Backpack 15.6"

	30 x 44 x 16
	17 l
	0.7 kg
	26.7 cm/10.5" - 26.6 x 18.3 x 1.5 cm
	39.6 cm/15.6" - 37.5 x 25.9 x 2.8 cm



140562

Travel Backpack 15.6" EXP

	31.5 x 42.5 x 14.5/17
	30 l
	1 kg
	26.7 cm/10.5" - 26.6 x 18.3 x 1.5 cm
	39.6 cm/15.6" - 37.5 x 25.9 x 2.8 cm



LIMITED 5 year WARRANTY

140564

Duffel/WH 55 Lenght 35 cm DF

	35 x 55 x 20
	39 l
	2.3 kg
	26.7 cm/10.5" - 26.6 x 18.3 x 1.5 cm
	39.6 cm/15.6" - 37.5 x 25.9 x 2.8 cm



A backpack to be safe anytime! This anti-theft collection mixes a stylish shape with security features.

- Exterior fabric and interior lining made from recycled PET bottles, part of our Recyclax™ Material Technology Initiative
- Cut resistant material layer
- Internal business organisation with zipped pocket
- Hidden side pockets, one of them with RFID
- Protection and a Quick Access pocket

MATCHES

SECURIPAK™ P. 90



Black Steel
T061



Eclipse Blue
7769



Stone Grey
1830



USB port to charge your devices



Reflective details on frontal panel



RFID pocket to protect your documents





130109

Laptop Backpack 14.1"

	29.5 x 38.5 x 12.5
	10 l
	0.6 kg

PRO-DLX 5		96
OPENROAD 2.0		100
VECTURA EVO		102
XBR		104
STACKD BIZ		108
LITEPOINT		110
MYSIGHT		112
GUARDIT 2.0		114
NETWOK 4		116
HIP-SQUARE		118
AIRGLOW SLEEVES		119
ZALIA 2.0		120
OPENROAD CHIC 2.0		122
WORKATIONIST		124
BE-HER	NEW	126
ECO WAVE		128
ONGOING	NEW	130
GUARDIT CLASSY		132
MOVE 4.0	NEW	134





BUSINESS
& BAGS

BUSINESS
& BAGS

BUSINESS
& BAGS

**BUSINESS
& BAGS**

BUSINESS
& BAGS

BUSINESS
& BAGS

BUSINESS
& BAGS

BUSINESS
& BAGS

PRO-DLX 5™

8636

Top performance to fulfill the demands of the frequent business traveller.

- Extra strong ballistic Nylon body
- Top zipped service pocket
- Easy Pass™ allows electronic devices to stay inside the bag while charging
- To Go Side Pocket™ for small belongings on all wheeled items



Black
1041



Oxford Blue
1647



Soft-touch top pocket



Premium interior organisation



RFID protected pocket





Samsonite Bu...



Samsonite Bu...



106352

Laptop Bailhandle 15.6" EXP

	42 x 30.5 x 15
	17 l
	1.5 kg
	26.7 cm/10.5" - 26.6 x 18.3 x 1.5 cm
	39.6 cm/15.6" - 37.5 x 25.9 x 2.8 cm



106349

Tablet Crossover 9.7"



	18 x 23 x 5.5
	3 l
	0.3 kg
	24.5 cm/9.7" - 24 x 17 x 1.3 cm



106355

Laptop Bailhandle 17.3" EXP

	46 x 33 x 17.5
	24.5 l
	1.7 kg
	26.7 cm/10.5" - 26.6 x 18.3 x 1.5 cm
	43.9 cm/17.3" - 42.2 x 28.7 x 3.8 cm



106351

Laptop Bailhandle 14.1"



	37 x 27.5 x 11
	8.5 l
	1 kg
	26.7 cm/10.5" - 26.6 x 18.3 x 1.5 cm
	35.6 cm/14" - 34 x 24 x 2.4 cm



106373

Tri-Fold Garment Bag

	55 x 40 x 20
	0.01 l
	1.6 kg



106358

Laptop Backpack 14.1"



	30 x 41.5 x 16
	14 l
	1.2 kg
	26.7 cm/10.5" - 26.6 x 18.3 x 1.5 cm
	35.6 cm/14" - 34 x 24 x 2.4 cm



106359

Laptop Backpack 15.6" EXP



	32 x 44.5 x 18/23
	21/26 l
	1.4 kg
	26.7 cm/10.5" - 26.6 x 18.3 x 1.5 cm
	39.6 cm/15.6" - 37.5 x 25.9 x 2.8 cm



106360

Laptop Backpack 3V 15.6"



	36.5 x 44.5 x 19
	20 l
	1.4 kg
	26.7 cm/10.5" - 26.6 x 18.3 x 1.5 cm
	39.6 cm/15.6" - 37.5 x 25.9 x 2.8 cm



106361

Laptop Backpack 17.3" 3V EXP



	39 x 48 x 20/25
	29/34 l
	1.7 kg
	26.7 cm/10.5" - 26.6 x 18.3 x 1.5 cm
	43.9 cm/17.3" - 42.2 x 28.7 x 3.8 cm



106362

Laptop Backpack/WH 17.3"



	33 x 48 x 20
	28 l
	2.6 kg
	26.7 cm/10.5" - 26.6 x 18.3 x 1.5 cm
	43.9 cm/17.3" - 42.2 x 28.7 x 3.8 cm



106363

**Business Case/WH
15.6" EXP**

	46 x 33 x 20
	29.5 l
	2.8 kg
	26.7 cm/10.5" - 26.6 x 18.3 x 1.5 cm
	39.6 cm/15.6" - 37.5 x 25.9 x 2.8 cm



106364

Rolling Tote 15.6"

	46 x 33 x 20
	34.5 l
	3.1 kg
	26.7 cm/10.5" - 26.6 x 18.3 x 1.5 cm
	39.6 cm/15.6" - 37.5 x 25.9 x 2.8 cm



106369

Upright 55 EXP

	40 x 55 x 23
	44.5 l
	3.3 kg
	26.7 cm/10.5" - 26.6 x 18.3 x 1.5 cm
	39.6 cm/15.6" - 37.5 x 25.9 x 2.8 cm



106365

Rolling Tote 17.3"

	48.5 x 39 x 23
	37.5 l
	3.4 kg
	26.7 cm/10.5" - 26.6 x 18.3 x 1.5 cm
	43.9 cm/17.3" - 42.2 x 28.7 x 3.8 cm



106371

Spinner 55 EXP

	40 x 55 x 23/28
	40.5/51.5 l
	3.2 kg
	26.7 cm/10.5" - 26.6 x 18.3 x 1.5 cm
	39.6 cm/15.6" - 37.5 x 25.9 x 2.8 cm



OPENROAD 2.0™

B660

The evolution into the 2.0 version with tech features, improved organisation but consistent coolness.

- Double side bottle pockets
- Smart Sleeve, which doubles as security pocket (on Backpacks and Bailhandles only)
- A step forward in terms of accessibility and usability



Black
1041



Cool Blue
1971



Metallic logo plate enriches the line with class



USB port to charge devices
(battery sold separately)



Water resistant laptop
compartment





137211

Waistbag



	39 x 14 x 7.5
	3.5 l
	0.3 kg
	26.7 cm/10.5" - 26.6 x 18.3 x 1.5 cm
	43.9 cm/17.3" - 42.2 x 28.7 x 3.8 cm



137205

Tablet Crossover 7.9"



	15.5 x 22.5 x 7
	2.5 l
	0.3 kg
	20.3 cm/8" - 21.6 x 13.5 x 1.4 cm



137206

Tablet Crossover 9.7"



	19 x 24 x 8.5
	4 l
	0.4 kg
	24.5 cm/9.7" - 24 x 17 x 1.3 cm



137210

Bailhandle 15.6" EXP



	43 x 31 x 13.5/21.5
	20/24 l
	1.4 kg
	26.7 cm/10.5" - 26.6 x 18.3 x 1.5 cm
	39.6 cm/15.6" - 37.5 x 25.9 x 2.8 cm



137207

Laptop Backpack 14.1"



	29 x 41 x 16
	22.5 l
	1.4 kg
	26.7 cm/10.5" - 26.6 x 18.3 x 1.5 cm
	35.6 cm/14" - 34 x 24 x 2.4 cm



137208

Laptop Backpack 15.6"



	31 x 43 x 17
	18 l
	1.3 kg
	26.7 cm/10.5" - 26.6 x 18.3 x 1.5 cm
	39.6 cm/15.6" - 37.5 x 25.9 x 2.8 cm



137209

Laptop Backpack 17.3" + Cloth. Comp



	32 x 46 x 19/27
	29.5//34 l
	1.6 kg
	26.7 cm/10.5" - 26.6 x 18.3 x 1.5 cm
	35.6 cm/14" - 34 x 24 x 2.4 cm

Essential and smart, featuring a lightweight design and cutting-edge functionality.

- Soft padded touch points, handles and shoulder straps
- Easy Pass™ system which allows to connect devices stored in different compartments
- Smart Sleeve on all models



Black
1041



USB port to charge devices
(powerbank sold separately)



Complete interior organisation



Laptop and tablet compartment





VECTURA EVO
Laptop Backpack



123665

Office Case 15.6"



	41 x 30 x 7
	14 l
	0.9 kg
	26.7 cm/10.5" - 26.6 x 18.3 x 1.5 cm
	39.6 cm/15.6" - 37.5 x 25.9 x 2.8 cm



123669

Laptop Bailhandle 14.1"



	37 x 27.5 x 7
	10 l
	0.7 kg
	26.7 cm/10.5" - 26.6 x 18.3 x 1.5 cm
	35.6 cm/14" - 34 x 24 x 2.4 cm



123670

Laptop Bailhandle 15.6"



	41 x 30 x 12
	18 l
	1 kg
	26.7 cm/10.5" - 26.6 x 18.3 x 1.5 cm
	39.6 cm/15.6" - 37.5 x 25.9 x 2.8 cm



123671

Laptop Bailhandle 17.3"



	44 x 32 x 12
	20.5 l
	1.1 kg
	26.7 cm/10.5" - 26.6 x 18.3 x 1.5 cm
	43.9 cm/17.3" - 42.2 x 28.7 x 3.8 cm



123672

Laptop Backpack 14.1"



	29 x 41 x 16
	19 l
	0.9 kg
	26.7 cm/10.5" - 26.6 x 18.3 x 1.5 cm
	35.6 cm/14" - 34 x 24 x 2.4 cm



123673

Laptop Backpack 15.6"



	29 x 44.5 x 18
	22 l
	0.9 kg
	26.7 cm/10.5" - 26.6 x 18.3 x 1.5 cm
	39.6 cm/15.6" - 37.5 x 25.9 x 2.8 cm



LIMITED
5 year
WARRANTY

123675

Rolling Tote 17.3"



	46 x 35 x 20
	27.5 l
	2.8 kg
	26.7 cm/10.5" - 26.6 x 18.3 x 1.5 cm
	43.9 cm/17.3" - 42.2 x 28.7 x 3.8 cm

Functional combination of premium laptop protection and professional design.

- Distinct and functional design
- Complete internal organisation for documents and personal items
- Smart Fit™ laptop fastening system on all models



Black
1041



Smart Sleeve for ease of transport



Laptop Pillow protection system



Functional interior organisation





75212

Tablet Crossover 7.9"



	19.5 x 23 x 11
	4 l
	0.4 kg
	20.3 cm/8" - 21.6 x 13.5 x 1.4 cm



75213

Tablet Crossover 9.7"



	22 x 27 x 11
	4.5 l
	0.4 kg
	24.5 cm/9.7" - 24 x 17 x 1.3 cm



75218

Bailhandle 2C 15.6"



	44 x 33 x 20.5
	19 l
	1.3 kg
	26.7 cm/10.5" - 26.6 x 18.3 x 1.5 cm
	39.6 cm/15.6" - 37.5 x 25.9 x 2.8 cm





75219

Bailhandle 3C 15.6" EXP

	44.5 x 34 x 24.5
	24 l
	1.6 kg
	26.7 cm/10.5" - 26.6 x 18.3 x 1.5 cm
	39.6 cm/15.6" - 37.5 x 25.9 x 2.8 cm



75214

Laptop Backpack 14.1"

	32 x 44 x 23
	18.5 l
	1.3 kg
	26.7 cm/10.5" - 26.6 x 18.3 x 1.5 cm
	35.6 cm/14" - 34 x 24 x 2.4 cm



75215

Laptop Backpack 15.6"

	33.5 x 47 x 24.5
	22 l
	1.4 kg
	26.7 cm/10.5" - 26.6 x 18.3 x 1.5 cm
	39.6 cm/15.6" - 37.5 x 25.9 x 2.8 cm



92128

Laptop Backpack 3V 15.6"

	37.5 x 48 x 25
	22 l
	1.4 kg
	26.7 cm/10.5" - 26.6 x 18.3 x 1.5 cm
	39.6 cm/15.6" - 37.5 x 25.9 x 2.8 cm



75216

Laptop Backpack 17.3"

	35 x 51 x 25
	29 l
	1.5 kg
	26.7 cm/10.5" - 26.6 x 18.3 x 1.5 cm
	43.9 cm/17.3" - 42.2 x 28.7 x 3.8 cm



75222

Business Case/WH 15.6"

	45.5 x 40 x 22
	27.5 l
	3.1 kg
	26.7 cm/10.5" - 26.6 x 18.3 x 1.5 cm
	39.6 cm/15.6" - 37.5 x 25.9 x 2.8 cm



75223

Rolling Tote 15.6"

	45.5 x 40 x 24
	27.5 l
	3.2 kg
	26.7 cm/10.5" - 26.6 x 18.3 x 1.5 cm
	39.6 cm/15.6" - 37.5 x 25.9 x 2.8 cm

LIMITED
5
year
WARRANTY

LIMITED
5
year
WARRANTY

Born in cross design with the travel line, StackD Biz blink the eye to the modern consumer fitting the emerging trends in terms of look and gender. With the assortment focused on Backpacks, each size has different interpretation in terms of look and functionality.



Black
1041



Navy
1596



Forest
1338



Rose
1751

- Unisex design
- Exterior fabric and interior lining made from recycled PET bottles, part of our Recyclex™ Material Technology Initiative
- USB port

MATCHES

STACKD P. 26 AND STACKD TOILET KIT P. 180



Slim easy access front pocket

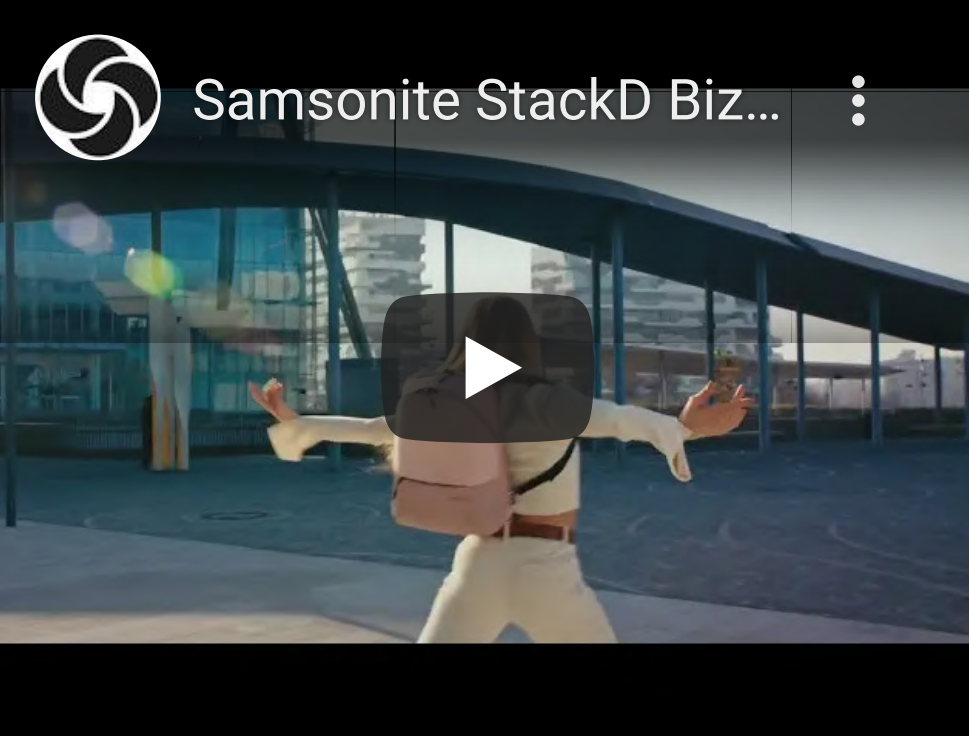


Top handle integrated into shoulder straps



Cloth compartment on Laptop Backpack 17.3" EXP





141470

Laptop Backpack 14.1"

	30 x 42.5 x 18
	15 l
	1.0 kg
	26.7 cm/10.5" - 26.6 x 18.3 x 1.5 cm
	35.6 cm/14" - 24 x 24 x 2.4 cm



141471

Laptop Backpack 15.6"

	31.5 x 44 x 18.5
	16.5 l
	1.0 kg
	26.7 cm/10.5" - 26.6 x 18.3 x 1.5 cm
	39.6 cm/15.6" - 37.5 x 25.9 x 2.8 cm



141472

Laptop Backpack 17.3" EXP

	34 x 47 x 21/25.5
	22/30 l
	1.4 kg
	26.7 cm/10.5" - 26.6 x 18.3 x 1.5 cm
	43.9 cm/17.3" - 42.2 x 28.7 x 3.8 cm

Litepoint is your total mobile workspace into one light Backpack.

- Exterior fabric and interior lining made from recycled PET bottles, part of our Recyclex™ Material Technology Initiative
- Reflective details on the front
- Wide assortment of models



Black
1041



Grey
1408



Peacock
1671



Detailed zipper pullers on reflective zipper

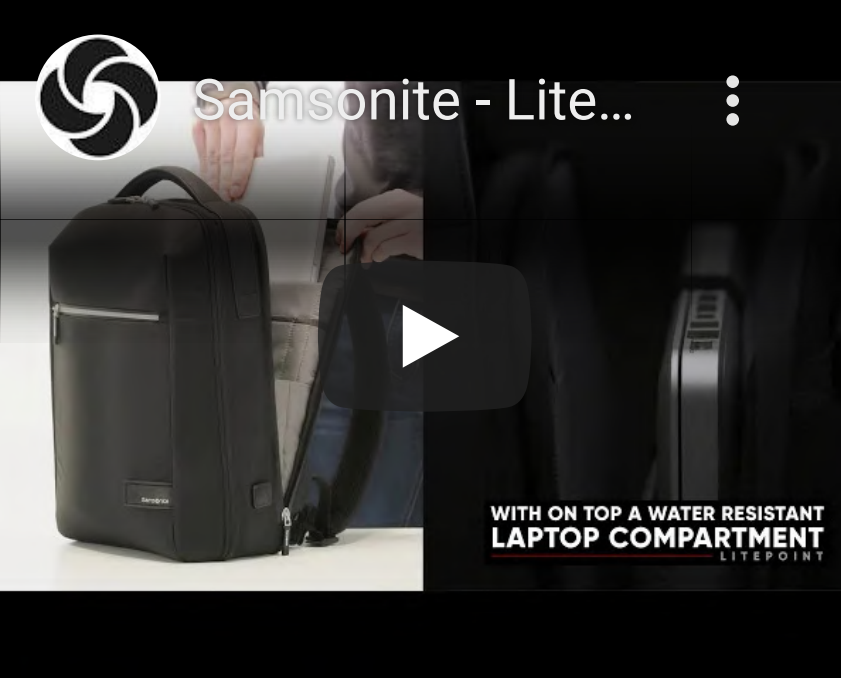


Minimalist approach of the Samsonite logo



Powerbank organisation





134554

Waistbag



	34 x 15.5 x 7.5
	2.88 l
	0.215 kg



134547

Bailhandle 15.6" EXP



	40.5 x 30 x 13/18
	17.5/22 l
	0.9 kg
	26.7 cm/10.5" - 26.6 x 18.3 x 1.5 cm
	39.6 cm/15.6" - 37.5 x 25.9 x 2.8 cm



134545

Tablet Crossover 9.7"



	20 x 8.5 x 25
	4.5 l
	0.2 kg
	24.5 cm/9.7" - 24 x 17 x 1.3 cm



134548

Laptop Backpack 14.1"



	28.5 x 40.5 x 11
	16 l
	0.8 kg
	26.7 cm/10.5" - 26.6 x 18.3 x 1.5 cm
	35.6 cm/14" - 34 x 24 x 2.4 cm



134549

Laptop Backpack 15.6"



	30 x 43 x 13
	18 l
	0.9 kg
	26.7 cm/10.5" - 26.6 x 18.3 x 1.5 cm
	39.6 cm/15.6" - 37.5 x 25.9 x 2.8 cm



134550

Laptop Backpack 17.3" EXP



	32 x 46 x 18/23
	25/31 l
	2.4 kg
	26.7 cm/10.5" - 26.6 x 18.3 x 1.5 cm
	43.9 cm/17.3" - 42.2 x 28.7 x 3.8 cm



134551

Laptop Backpack/WH 17.3"



	32.5 x 48 x 20
	30 l
	1.3 kg
	26.7 cm/10.5" - 26.6 x 18.3 x 1.5 cm
	43.9 cm/17.3" - 42.2 x 28.7 x 3.8 cm

High-tech & lightweight design with smart organisation, in an eco-friendly body exterior.

- Exterior fabric made from recycled PET bottles, part of our Recyclax™ Material Technology Initiative
- Detachable pen pouch with Velcro fastening
- Smart Sleeve, comfortable padded handles and shoulder straps on all models
- Small colourful details for a modern touch



Black
1041



Blue
1090



USB port on all models



Removable pen pouch



Laptop and tablet compartment





135074
Laptop Bag 14.1"

	38 x 27.5 x 7
	8.5 l
	0.6 kg
	26.7 cm/10.5" - 26.6 x 18.3 x 1.5 cm
	35.6 cm/14" - 34 x 24 x 2.4 cm



135075
Laptop Bag 15.6"

	42 x 30 x 10.5
	12.5 l
	0.7 kg
	26.7 cm/10.5" - 26.6 x 18.3 x 1.5 cm
	39.6 cm/15.6" - 37.5 x 25.9 x 2.8 cm



135070
Backpack 14.1"

	28 x 40 x 13.5
	16.5 l
	0.9 kg
	26.7 cm/10.5" - 26.6 x 18.3 x 1.5 cm
	35.6 cm/14" - 34 x 24 x 2.4 cm



135071
Backpack 15.6"

	30 x 43 x 16
	19 l
	0.9 kg
	26.7 cm/10.5" - 26.6 x 18.3 x 1.5 cm
	39.6 cm/15.6" - 37.5 x 25.9 x 2.8 cm



135072
Backpack 17.3"

	32 x 46 x 17.5
	25.5 l
	1.1 kg
	26.7 cm/10.5" - 26.6 x 18.3 x 1.5 cm
	43.9 cm/17.3" - 42.2 x 28.7 x 3.8 cm



135073
Backpack/WH 17.3"

	32.5 x 48 x 18.5
	25.5 l
	2.4 kg
	26.7 cm/10.5" - 26.6 x 18.3 x 1.5 cm
	43.9 cm/17.3" - 42.2 x 28.7 x 3.8 cm

The convenience of an everyday laptop-carrying bag, with a sleek and professional look.

- Interesting mix of 2 different polyester materials
- Service pocket with soft-touch lining for sunglasses, tickets and other small essentials
- Redesigned interior organisation to better suit the latest electronic devices



Black
1041



Blue
1090

MATCHES

GUARDIT CLASSY P. 132



115325

Office Case 15.6"

	40 x 30 x 9
	16 l
	0.7 kg
	26.7 cm/10.5" - 26.6 x 18.3 x 1.5 cm
	39.6 cm/15.6" - 37.5 x 25.9 x 2.8 cm



115326

Bailhandle 13.3"



	34.5 x 24.5 x 8.5
	9.5 l
	0.4 kg
	26.7 cm/10.5" - 26.6 x 18.3 x 1.5 cm
	33.8 cm/ 13.3" - 32.5 x 22.9 x 2 cm



115327

Bailhandle 15.6"



	40 x 30 x 9
	14.5 l
	0.5 kg
	26.7 cm/10.5" - 26.6 x 18.3 x 1.5 cm
	39.6 cm/15.6" - 37.5 x 25.9 x 2.8 cm

Smart Sleeve in all items





115328
Bailhandle 17.3"

	43 x 32 x 10
	18.5 l
	0.6 kg
	26.7 cm/10.5" - 26.6 x 18.3 x 1.5 cm
	43.9 cm/17.3" - 42.2 x 28.7 x 3.8 cm



115329
Laptop Backpack S 14.1"

	29 x 40 x 18
	17.5 l
	0.7 kg
	26.7 cm/10.5" - 26.6 x 18.3 x 1.5 cm
	35.6 cm/14" - 34 x 24 x 2.4 cm



115330
Laptop Backpack M 15.6"

	30 x 44 x 20
	22.5 l
	0.7 kg
	26.7 cm/10.5" - 26.6 x 18.3 x 1.5 cm
	39.6 cm/15.6" - 37.5 x 25.9 x 2.8 cm



115331
Laptop Backpack L 17.3"

	32 x 48 x 20.5
	27.5 l
	0.8 kg
	26.7 cm/10.5" - 26.6 x 18.3 x 1.5 cm
	43.9 cm/17.3" - 42.2 x 28.7 x 3.8 cm



115333
Laptop Backpack/WH 15.6"

	33.5 x 48 x 20
	29 l
	2.2 kg
	26.7 cm/10.5" - 26.6 x 18.3 x 1.5 cm
	39.6 cm/15.6" - 37.5 x 25.9 x 2.8 cm



115332
Rolling Tote 17.3"

	45 x 33 x 18
	26.5 l
	2.7 kg
	26.7 cm/10.5" - 26.6 x 18.3 x 1.5 cm
	43.9 cm/17.3" - 42.2 x 28.7 x 3.8 cm

LIMITED
5
year
WARRANTY

LIMITED
5
year
WARRANTY

NETWORK 4™

C410

Our iconic Samsonite tech line featuring a modern and minimal look. Functionality, aggressive price point and Eco material make Network 4 a must have.

- Modern design
- Interior and exterior lining made from recycled PET bottles, part of our Recyclex™ Material Technology Initiative
- Lightness to increase the comfort



Charcoal Black
6551



Space Blue
1820



Metallic logo plate enriches the look



Colour contrast details as distinctive signature



Dedicated laptop and tablet compartment





142306
Bailhandle 14.1"



	3.58 x 28.5 x 10.5
	11 l
	0.7 kg
	26.7 cm/10.5" - 26.6 x 18.3 x 1.5 cm
	35.6 cm/14" - 34 x 24 x 2.4 cm



142307
Bailhandle 15.6"



	42.5 x 30.5 x 11
	15.5 l
	0.7 kg
	26.7 cm/10.5" - 26.6 x 18.3 x 1.5 cm
	39.6 cm/15.6" - 37.5 x 25.9 x 2.8 cm



142309
Laptop Backpack 14.1"



	28 x 40.5 x 19
	5.56 l
	0.7 kg
	26.7 cm/10.5" - 26.6 x 18.3 x 1.5 cm
	35.6 cm/14" - 34 x 24 x 2.4 cm



142310
Laptop Backpack 15.6"



	31 x 43.5 x 19.5
	20.5 l
	0.8 kg
	26.7 cm/10.5" - 26.6 x 18.3 x 1.5 cm
	39.6 cm/15.6" - 37.5 x 25.9 x 2.8 cm



142311
Laptop Backpack 17.3"



	32.5 x 46 x 21
	25 l
	0.98 kg
	26.7 cm/10.5" - 26.6 x 18.3 x 1.5 cm
	43.9 cm/17.3" - 42.2 x 28.7 x 3.8 cm

Contemporary collection of bags aimed at convenience without sacrificing looks.

- Nylon and Polyurethane body with matte metal hardware and square Samsonite logo
- Different Crossover sizes and designs with internal organisation
- Clutch designs with internal organisation, including detachable loop handle and back pocket



Black
1041



Dark Blue
1247



92906

Crossover S

	17 x 23 x 6.5
	2 l
	0.2 kg



92907

Tablet Crossover M 7.9"

	21.5 x 25 x 7.5
	3.5 l
	0.3 kg
	20.3 cm/8" - 21.6 x 13.5 x 1.4 cm



92910

Clutch S 2C

	23.5 x 15.5 x 7.5
	1.5 l
	0.2 kg



Tablet/eReader compartment



Matte Samsonite logo



Custom zipper pullers with logo



Super soft sleeves range offering a convenient way to protect and transport a tablet, netbook or laptop.

- Outer pockets store smaller valuable items
- Choice of bold accent colours



Black/Red
1073



Black/Blue
2642

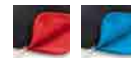


46749

Laptop Sleeve 13.3"



	33.5 x 25 x 5
	2.5 l
	0.3 kg
	33.8 cm/13.3" - 32.5 x 22.9 x 2 cm

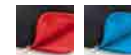


78145

Laptop Sleeve New 14.1"



	36 x 26 x 6
	4 l
	0.3 kg
	35.6 cm/14" - 34 x 24 x 2.4 cm



46123

Laptop Sleeve 15.6"



	40 x 30.5 x 5
	4.5 l
	0.4 kg
	39.6 cm/15.6" - 37.5 x 25.9 x 2.8 cm

Elegant and feminine without forgetting about organisation and functionality. It is the perfect mix!

- Protective metal studs on the bottom
- Samsonite lettering logo
- RFID pocket to protect your documents
- Nylon with Saffiano Polyurethane details
- Shiny Nickel finishing hardware



Black
1041



Midnight Blue
1549



Separated laptop compartment



USB port to charge your devices



Padded comfortable back panel





129439

Bailhandle 3 Comp 14.1"



	39 x 31 x 11
	13.78 l
	0.9 kg
	26.7 cm/10.5" - 26.6 x 18.3 x 1.5 cm
	35.6 cm/14" - 34 x 24 x 2.4 cm



129430

Bailhandle 2 Comp 15.6"



	41 x 31 x 13
	14.5 l
	1.1 kg
	26.7 cm/10.5" - 26.6 x 18.3 x 1.5 cm
	39.6 cm/15.6" - 37.5 x 25.9 x 2.8 cm



129440

Backpack 15.6"



	30 x 41 x 10
	17.94 l
	1.2 kg
	26.7 cm/10.5" - 26.6 x 18.3 x 1.5 cm
	39.6 cm/15.6" - 37.5 x 25.9 x 2.8 cm



129432

Backpack 14.1"



	31 x 39 x 10
	12.78 l
	1.0 kg
	26.7 cm/10.5" - 26.6 x 18.3 x 1.5 cm
	35.6 cm/14" - 34 x 24 x 2.4 cm



129431

Backpack W/Flap 14.1"



	28 x 36.5 x 11
	11.36 l
	1.1 kg
	26.7 cm/10.5" - 26.6 x 18.3 x 1.5 cm
	35.6 cm/14" - 34 x 24 x 2.4 cm



129438

Rolling Tote 15.6"



	43 x 33 x 16.5
	23.61 l
	2.7 kg
	26.7 cm/10.5" - 26.6 x 18.3 x 1.5 cm
	39.6 cm/15.6" - 37.5 x 25.9 x 2.8 cm

OPENROAD CHIC 2.0™

B997

Even more classy and contemporary, the 2.0 version has a new design and feminine details!

An improved organisation plus USB port complete our beloved urban range!

- A step forward in terms of accessibility and usability
- Double side bottle pockets
- Samsonite logo plate



Black
1041



Eclipse Blue
7769



Pearl Lilac
2274



Improved accessibility and top pocket



USB port & water resistant laptop compartment



Feminine logo plate and cool zipper pullers





139458

Waistbag

	32 x 13.5 x 9
	2 l
	0.2 kg



139457

Slim Bailhandle 15.6"

	41 x 31.5 x 11.5
	11.5 l
	0.9 kg
	26.7 cm/10.5" - 26.6 x 18.3 x 1.5 cm
	39.6 cm/15.6" - 37.5 x 25.9 x 2.8 cm



139459

Backpack 13.3"

	30.5 x 40 x 18.5
	13.5 l
	1.2 kg
	26.7 cm/10.5" - 26.6 x 18.3 x 1.5 cm
	33.8 cm/13.3" - 32.5 x 22.9 x 2 cm



139460

Backpack 14.1"

	32.5 x 44 x 21.5
	19 l
	1.3 kg
	26.7 cm/10.5" - 26.6 x 18.3 x 1.5 cm
	35.6 cm/14" - 34 x 24 x 2.4 cm



Explore new horizons and enjoy your vacation even if you are working: Workationist will be your loyal ally with its comfort and functional features in a urban & minimalistic Backpack!

- Exterior fabric and interior lining made from recycled PET bottles, part of our Recyclex™ Material Technology Initiative
- Water resistant laptop compartment & USB port
- Quick access pockets, one water resistant with PEVA lining



Black
1041



Blueberry
1120



Quartz
1721



Dedicated charm



Refined zipper pullers & feminine logo plate



New way for icons





142613
Shoulder bag + flap



	28 x 19 x 10
	4.5 l
	0.4 kg



142615
Tote 13.3"



	34 x 25 x 14
	12 l
	0.9 kg
	26.7 cm/10.5" - 26.6 x 18.3 x 1.5 cm
	33.8 cm/13.3" - 32.5 x 22.9 x 2 cm



142616
Tote 14.1"



	38 x 29 x 14
	17 l
	0.9 kg
	26.7 cm/10.5" - 26.6 x 18.3 x 1.5 cm
	35.6 cm/14" - 34 x 24 x 2.4 cm



142617
Bailhandle 15.6"



	40 x 29 x 9.5
	12 l
	0.9 kg
	26.7 cm/10.5" - 26.6 x 18.3 x 1.5 cm
	39.6 cm/15.6" - 37.5 x 25.9 x 2.8 cm



142619
Backpack 14.1"



	26 x 40 x 14.5
	14 l
	0.9 kg
	26.7 cm/10.5" - 26.6 x 18.3 x 1.5 cm
	35.6 cm/14" - 34 x 24 x 2.4 cm



142620
Backpack 15.6" + CL. COMP



	28 x 43 x 16.5
	17.5 l
	1.2 kg
	26.7 cm/10.5" - 26.6 x 18.3 x 1.5 cm
	39.6 cm/15.6" - 37.5 x 25.9 x 2.8 cm

The combination of lady's Handbags and business products make Be-Her the perfect item throughout the day. Light and comfortable without forgetting functionality and sustainability.

- Exterior fabric and interior lining made from recycled PET bottles, part of our Recyclex™ Material Technology Initiative
- Distinctive metal plate logo
- Feminine details



Black
1041



Antique Pink
5055



Petrol Grey
6325



144365

Shoulder bag XS



21 x 14 x 8



144364

**Horiz. Shoulder bag M
3 Comp**



28,5 x 19,5 x 12,5



Side bottle pocket

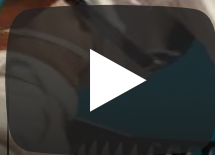


Internal organisation



Separated laptop compartment





144367
Bucket bag M

	28,5 x 28,5 x 13
	26.7 cm/10.5" - 26.6 x 18.3 x 1.5 cm
	35.6 cm/14" - 34 x 24 x 2.4 cm



144370
Backpack S

	20,5 x 30 x 10,5
	26.7 cm/10.5" - 26.6 x 18.3 x 1.5 cm
	39.6 cm/15.6" - 37.5 x 25.9 x 2.8 cm



144371
Backpack 14.1"

	26,5 x 38 x 10
	14.2 l
	0.7 kg
	26.7 cm/10.5" - 26.6 x 18.3 x 1.5 cm
	35.6 cm/14" - 34 x 24 x 2.4 cm



144373
Backpack 15.6"

	28 x 40 x 13,5
	18.2 l
	0.8 kg
	26.7 cm/10.5" - 26.6 x 18.3 x 1.5 cm
	39.6 cm/15.6" - 37.5 x 25.9 x 2.8 cm



144375
Tote 15.6"

	39 x 29 x 14
	15.2 l
	0.9 kg
	26.7 cm/10.5" - 26.6 x 18.3 x 1.5 cm
	35.6 cm/14" - 34 x 24 x 2.4 cm



144378
Shopping bag 14.1"

	38 x 29 x 14
	14.2 l
	0.8 kg
	26.7 cm/10.5" - 26.6 x 18.3 x 1.5 cm
	35.6 cm/14" - 34 x 24 x 2.4 cm

A light, comfortable and eco line that combines a contemporary and minimalist design.

- Exterior fabric made from recycled PET bottles, part of our Recyclax™ Material Technology Initiative
- Shiny Nickel hardware
- Business organisation
- Samsonite logo embossed on metal plate



Black
1041



Midnight Blue
1549



Stone Grey
1830



Separated laptop compartment



Quick Access pocket



Smart Sleeve to stack your bag on your suitcase





130662
Bailhandle 15.6"

	39 x 29 x 7
	10 l
	0.5 kg
	26.7 cm/10.5" - 26.6 x 18.3 x 1.5 cm
	39.6 cm/15.6" - 37.5 x 25.9 x 2.8 cm



130663
Bailhandle 15.6" 2 Comp

	39 x 29 x 11
	15.56 l
	0.7 kg
	26.7 cm/10.5" - 26.6 x 18.3 x 1.5 cm
	39.6 cm/15.6" - 37.5 x 25.9 x 2.8 cm



130664
Backpack 14.1"

	29 x 40 x 7
	12.67 l
	0.6 kg
	26.7 cm/10.5" - 26.6 x 18.3 x 1.5 cm
	35.6 cm/14" - 34 x 24 x 2.4 cm



130666
Backpack 15.6"

	33 x 43 x 15
	18.86 l
	0.8 kg
	26.7 cm/10.5" - 26.6 x 18.3 x 1.5 cm
	39.6 cm/15.6" - 37.5 x 25.9 x 2.8 cm



The perfect balance of simplicity and attention to details. Linear shapes, sober look and eco materials are the winning elements of Ongoing, suitable for everyday adventures while commuting to work.

- Interior lining made from recycled PET bottles, part of our Recyclex™ Material Technology Initiative
- The exterior fabric is made out of recycled nylon coming from post-industrial waste
- Quick access pockets
- Samsonite printed logo



Black
1041



Olive Green
1635



Petrol Grey
6325



Light Plum
7819



Side bottle pocket

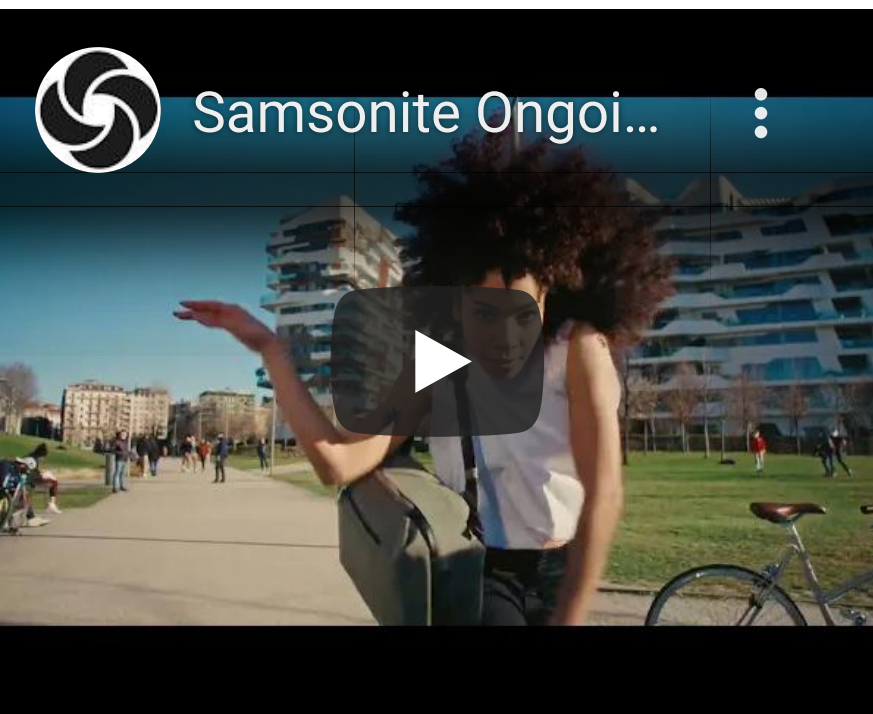


Separated laptop compartment



Top pocket





144759
Daily Backpack



	25 x 35 x 15
	11.5 l
	0.5 kg
	26.7 cm/10.5" - 26.6 x 18.3 x 1.5 cm
	35.6 cm/14" - 34 x 24 x 2.4 cm



144758
Backpack 14.1"



	28 x 37,5 x 14
	14.5 l
	0.7 kg
	26.7 cm/10.5" - 26.6 x 18.3 x 1.5 cm
	35.6 cm/14" - 34 x 24 x 2.4 cm



144760
Backpack 15.6"



	29,5 x 41 x 15
	17 l
	0.8 kg
	26.7 cm/10.5" - 26.6 x 18.3 x 1.5 cm
	35.6 cm/14" - 34 x 24 x 2.4 cm



144761
Bailhandle 15.6"



	40 x 29 x 9
	10.5 l
	0.7 kg
	26.7 cm/10.5" - 26.6 x 18.3 x 1.5 cm
	35.6 cm/14" - 34 x 24 x 2.4 cm



144762
**Bailhandle 15.6"
2 comp**



	40 x 29 x 13
	15 l
	0.8 kg
	26.7 cm/10.5" - 26.6 x 18.3 x 1.5 cm
	39.6 cm/15.6" - 37.5 x 25.9 x 2.8 cm



144763
Duffle



	45 x 36 x 22
	35.5 l
	0.7 kg
	26.7 cm/10.5" - 26.6 x 18.3 x 1.5 cm
	35.6 cm/14" - 34 x 24 x 2.4 cm



144764
Messenger 13.3"



	36 x 25 x 11.25
	11 l
	0.7 kg
	26.7 cm/10.5" - 26.6 x 18.3 x 1.5 cm
	39.6 cm/15.6" - 37.5 x 25.9 x 2.8 cm

GUARDIT CLASSY™

B999

If eco materials and minimalistic design are all you care about, this is the perfect line for you!

- Business organisation
- Exterior fabric and interior lining made from recycled PET bottles, part of our Recyclex™ Material Technology Initiative
- Shiny nickel finishing hardware
- Feminine pullers

MATCHES

GUARDIT 2.0 P. 114



Black
1041



Midnight Blue
1549



Stone Grey
1830



Separated laptop compartment



Padded back panel



Internal organisation





FABRIC AND LINING MADE FROM RECYCLED RPET BOTTLES



139467

Bailhandle 15.6"



	40 x 30 x 10
	11.5 l
	0.59 kg
	26.7 cm/10.5" - 26.6 x 18.3 x 1.5 cm
	39.6 cm/15.6" - 37.5 x 25.9 x 2.8 cm



139468

Backpack 14.1"



	29 x 40 x 18
	17.5 l
	0.7 kg
	26.7 cm/10.5" - 26.6 x 18.3 x 1.5 cm
	35.6 cm/14" - 34 x 24 x 2.4 cm



139469

Backpack 15.6"



	33 x 43 x 15
	18.86 l
	0.8 kg
	26.7 cm/10.5" - 26.6 x 18.3 x 1.5 cm
	39.6 cm/15.6" - 37.5 x 25.9 x 2.8 cm

The multi-pocket organisation is the best way to keep everything organised. Extremely light, easily foldable and also washable, Move 4.0 is the perfect line to carry with you wherever you want.

- Shiny nickel hardware and puller
- Outside multi-pocket organisation
- Samsonite lettering metal logo with rivets
- Interior lining and zippers made from recycled PET bottles, part of our Recyclex™ Material Technology Initiative



Black
1041



Dark Blue
1247



Rose
1751



Internal organisation



Samsonite lettering metal logo with rivets



Side pocket





144718
Reporter bag

28,5 x 21 x 10



144719
Horizontal Shoulder Bag + Flap

30 x 20 x 10,5



144720
Shoulder Bag S + 1 Pocket

27 x 23 x 13



144721
Shoulder Bag M + 2 Pockets

33 x 27 x 12



144722
Backpack S

24,5 x 29 x 11



144723
Backpack

27 x 35 x 12



144724
Backpack 14.1" Org.

29 x 38 x 12

14.1 l

26.7 cm/10.5" - 26.6 x 18.3 x 1.5 cm

35.6 cm/14" - 34 x 24 x 2.4 cm



144725
Waistbag S

32 x 14 x 6



DREAM RIDER		138
HAPPY SAMMIES ECO		140
HAPPY SAMMIES		144
MARVEL ULTIMATE 2.0 - SPIDER-MAN		146
DREAM RIDER MARVEL - SPIDER-MAN		147
DISNEY ULTIMATE 2.0 - MICKEY AND DONALD STARS		148
DREAM RIDER DISNEY - MICKEY AND DONALD STARS		149
DISNEY ULTIMATE 2.0 - MINNIE GLITTER		150
DREAM RIDER DISNEY - MINNIE GLITTER		151
DISNEY ULTIMATE 2.0 - FROZEN	NEW	152





KIDS &
LICENSES
KIDS &
LICENSES
KIDS &
LICENSES
KIDS &
LICENSES
KIDS &
LICENSES
KIDS &
LICENSES
**KIDS &
LICENSES**
KIDS &

The Dream Rider, available in cute characters, was designed to keep kids entertained and parents carefree while travelling.

- Light and durable
- Large storage volume
- Cabin-sized for all travels
- Playful designs



Tiger T.
7259



Zebra Z.
7258



Cheetah C.
8719



Leopard L.
8717



Puppy P.
9568



109640

Ride-on Suitcase Tiger T.

 51 x 37 x 22

 28 l

 1.9 kg



109640

Ride-on Suitcase Zebra Z.

 51 x 37 x 22

 28 l

 1.9 kg



Cross ribbons inside



Shoulder strap



Easy-to-grab webbing handles





109640

**Ride-on Suitcase
Puppy P.**



51 x 37 x 22



28 l



1.9 kg



109640

**Ride-on Suitcase
Cheetah C.**



51 x 37 x 22



28 l



1.9 kg



109640

**Ride-on Suitcase
Leopard L.**



51 x 37 x 22



28 l



1.9 kg



HAPPY SAMMIES ECO™

The Happy Sammies Eco family, made out of Recyclax™, embrace the cute companions of your kids. This season it is growing thanks to the introduction Penguin Peter.

- Lifestyle approach with unique 3D details
- Sternum straps & ergonomic Backpack straps with reflective strips
- ID tag
- Lifestyle Sammies logo patch



Ladybug Lally
9676



Lion Lester
9674



Penguin Peter
9675



Raccoon Remy
8734



142477

Toilet Kit Ladybug Lally

	22 x 14 x 9
	2.5 l
	0.1 kg



142478

Backpack S Ladybug Lally

	24 x 27,5 x 14,5
	7.5 l
	0.2 kg



142476

Backpack S+ Ladybug Lally

	26 x 32 x 15
	11 l
	0.2 kg



142475





Upright 45 Ladybug Lally

	36 x 45 x 18
	23 l
	1.6 kg



142469





Toilet Kit Lion Lester

	22 x 14 x 9
	2.5 l
	0.1 kg
	



142470





Backpack S Lion Lester

	24 x 27.5 x 14.5
	7.5 l
	0.2 kg
	



142431





Backpack S+ Lion Lester

	26 x 32 x 15
	11 l
	0.2 kg
	







142430

Upright 45 Lion Lester

	36 x 45 x 18
	23 l
	1.6 kg
	







142473
**Toilet Kit
Penguin Peter**

	22 x 14 x 9
	2.5 l
	0.1 kg
	







142474
**Backpack S
Penguin Peter**

	24 x 27.5 x 14.5
	7.5 l
	0.2 kg
	




142472
**Backpack S+
Penguin Peter**

	26 x 32 x 15
	11 l
	0.2 kg
	







142471
**Upright 45
Penguin Peter**

	36 x 45 x 18
	23 l
	1.6 kg
	



132081




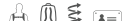
**Toilet Kit
Raccoon Remy**

	22 x 14 x 9
	2.5 l
	0.1 kg
	



132082





**Backpack S
Raccoon Remy**

	24 x 27.5 x 14.5
	7.5 l
	0.2 kg
	



132079





**Backpack S+
Raccoon Remy**

	26 x 32 x 15
	11 l
	0.2 kg
	



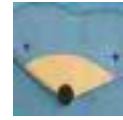
132078

**Upright 45
Raccoon Remy**

	36 x 45 x 18
	23 l
	1.6 kg
	

Dream away with our original lifestyle collection in a variety of cute animal characters!

- Cute, character-themed zipper puller on upright & toilet kit
- Lifestyle approach with unique 3D details
- Sternum straps & ergonomic Backpack straps with reflective strip
- ID tag



Hedgehog Harris
7734



Fox William
6562



Sammies
by Samsonite



93445

Toilet Kit Fox William

	21.5 x 13 x 8
	2 l
	0.1 kg



93444

Backpack S Fox William

	24 x 27.5 x 14
	7.5 l
	0.2 kg



93431

Upright 45 Fox William

	36 x 45 x 17.5
	24 l
	1.6 kg



120318

Backpack S Hedgehog Harris

	24 x 28 x 14
--	--------------

	7 l
--	-----

	0.2 kg
--	--------



120322

Backpack S+ Hedgehog Harris

	28 x 34 x 15
--	--------------

	11 l
--	------

	0.2 kg
--	--------



120319

Upright 45 Hedgehog Harris

	35 x 45 x 19
--	--------------

	23 l
--	------

	1.6 kg
--	--------



With the MARVEL Ultimate 2.0 Spider-Man collection, kids will be all set to embark on great travel adventures!

- Towel embroidery Spider-Man details on all bags
- Themed zipper pullers and embossed character on the Spinner
- ID tags on all items
- Forms a matching set with the Dream Rider MARVEL ride-on



Spider-Man
5059



© Disney
© MARVEL



131856
Spinner 46 MARVEL

	33 x 46.5 x 22.5
	20.5 l
	1.7 kg



131853
Backpack S MARVEL

	23.5 x 28.5 x 13.5
	7 l
	0.3 kg



131854
Backpack S+ MARVEL

	26 x 35 x 15
	11 l
	0.3 kg



131855
Backpack M MARVEL

	30 x 42 x 16
	16 l
	0.4 kg

Discover the Dream Rider MARVEL collection, which matches perfectly with the MARVEL Ultimate 2.0 collection!

- Large storage volume
- Suitable for 3 to 8 year-olds
- Cabin-sized for all travels
- Light and durable



131886

Suitcase MARVEL

	51 x 37 x 22
	28 l
	1.9 kg



Spider-Man
5059

MARVEL®

© Disney
© MARVEL



Cross ribbons inside



Shoulder strap



Easy-to-grab webbing handles



Mickey and Donald are ready to join the Disney Ultimate 2.0 collection in a dreaming starry version.

- Donald's hat and Mickey's ears are made out of embroidered soft fleece adding a playful touch to the collection
- Themed zipper pullers and embossed character on the Spinner
- ID tags on all items
- Forms a matching set with the Dream Rider Disney ride-ons



© Disney



Mickey Stars
9548



Donald Stars
9549



Mickey and Donald Stars
9550



140110
Spinner 46*

	33 x 46.5 x 22.5
	20.5 l
	1.7 kg



140106
Backpack S

	23.5 x 28.5 x 13.5
	7 l
	0.3 kg



140108
Backpack S+

	26 x 35 x 15
	11 l
	0.3 kg



140111
Backpack S

	23.5 x 28.5 x 13.5
	7 l
	0.3 kg



140113
Backpack S+

	26 x 35 x 15
	11 l
	0.3 kg

*only available in colour 9550



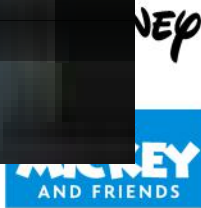
Samsonite Dream...



DISNEY™

KIDS

- Large storage volume
- Suitable for 3 to 8 year-olds, ride-on fun!
- Cabin-sized for all travels
- Light and durable



Mickey Stars
9548



Donald Stars
9549



109641

Suitcase Disney

	51 x 37 x 22
	28 l
	2.2 kg

Cross ribbons inside



Leash that can be used as shoulder strap



109641

Suitcase Disney

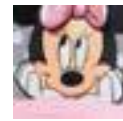
	51 x 37 x 22
	28 l
	2.2 kg

Integrated wheels



Minnie fans will be delighted with our Disney Ultimate 2.0 Minnie Glitter collection for 3 to 6 year-olds.

- 3D design: glittery Minnie bow and felt ears on the backpack
- Winning combination of pink with white polka dots
- Forms a matching set with the Minnie Glitter Dream Rider Disney ride-on
- Embossed Minnie on the Spinner



Minnie Glitter
7064



© Disney



106711

Spinner 46 Disney

	32 x 46.5 x 23
	20.5 l
	1.7 kg



106708

Backpack S+ Disney

	22 x 35 x 14.5
	11.5 l
	0.2 kg



106707

Backpack S Disney

	23.5 x 28.5 x 13.5
	7 l
	0.2 kg

S-shaped shoulder straps and sternum straps



Discover the Minnie Glitter Dream Rider Disney, which forms a matching set with the Minnie Glitter Disney Ultimate 2.0 collection!

- Large storage volume
- Suitable for 3 to 8 year-olds
- Cabin-sized for all travels
- Light and durable



Minnie Glitter
7064

Disney

© Disney



109641

Suitcase Disney

	51 x 37 x 22
	28 l
	1.9 kg



Cross ribbons inside



Integrated wheels



Anna, Elsa and the most cuddly Olaf are ready to join the Disney Ultimate 2.0 family to accompany your kids during their magic daily adventures.

- Themed zipper pullers
- Embossed characters on the Spinner
- Forms a matching set with the Frozen Dream Rider Disney ride-on
- Backpacks are completely made by RPET (Recyclex™) fabric (exterior fabric & lining)



Frozen
4427



© Disney



recyclex™



Disney Frozen logo patch







Rubberised snowflake puller





145740





Backpack S
Disney Frozen

	23.5 x 28.5 x 13.5
	7 l
	0.3 kg
	



145742

Backpack S+
Disney Frozen

	26 x 35 x 15
	11 l
	0.3 kg
	



145743

Spinner 46
Disney Frozen

	33 x 46.5 x 22.5
	20.5 l
	1.7 kg
	

ALU DROP S
RAIN PRO
WOOD CLASSIC S

156
158
160





UMBRELLAS
UMBRELLAS
UMBRELLAS
UMBRELLAS
UMBRELLAS
UMBRELLAS
UMBRELLAS
UMBRELLAS
UMBRELLAS
UMBRELLAS
UMBRELLAS
UMBRELLAS
UMBRELLAS
UMBRELLAS
UMBRELLAS
UMBRELLAS
UMBRELLAS
UMBRELLAS
UMBRELLAS
UMBRELLAS
UMBRELLAS
UMBRELLAS
UMBRELLAS

ALU DROP S™

9061

A line with a wide assortment of styles and colours for every kind of use and taste.

- Lightness thanks to the aluminium construction
- Largest assortment of colours and models in our category



Black
1041



Indigo Blue
1439



Tomato
1868



Raspberry Rose*
6264



Sunset Red Polka Dots*
9683



Violet Pink Polka Dots*
9684



Yellow Polka Dots*
9685



*until stock depletion



108962
3 Sect. Manual Flat
 ≡ 23 cm 📦 0.16 kg
 Ø 94.5 cm 🛠️ MANUAL
 ⚡ 3 🧤 YES
 🌧️ YES



108965
3 Sect. Auto O/C slim
 ≡ 26 cm 📦 0.24 kg
 Ø 95 cm 🛠️ AUTO O/C
 ⚡ 3 🧤 NO
 🌧️ YES



108966
Safe 3 Sect. Auto O/C
 ≡ 28.5 cm 📦 0.31 kg
 Ø 98 cm 🛠️ SAFE
 🛠️ AUTO O/C
 ⚡ 3 🧤 NO
 🌧️ YES



108960
Stick Man Auto Open
 ≡ 96 cm 📦 0.48 kg
 Ø 115 cm 🛠️ AUTO O
 ⚡ 1 🧤 YES
 🌧️ YES

Unisex range at entry price level for practical and easy use.

- Functional design and construction
- Fabric with teflon coating
- Samsonite logo on the handle and pouch

	Black 1041		NEW Light Plum 7819
	Blue 1090		NEW Orange 1641
	Pistachio Green* 0588		NEW Jeans 1459
	Burnt Orange* 1156		
	Violet Pink* E457		





56157
3 Sect. Ultra Mini Flat

 22.5 cm	 0.16 kg
 88.5 cm	 MANUAL
 3	 YES
 YES	





56158
3 Sect. Manual Flat

 24 cm	 0.16 kg
 97 cm	 MANUAL
 3	 YES
 YES	



*until stock depletion



56159
3 Sect. Auto O/C

- ☞ 28.5 cm
- ⚖ 0.31 kg
- ∅ 98 cm
- ⚙ AUTO O/C
- 👉 3
- ☔ YES
- 🌬 YES



56161
Stick Umbrella

- ☞ 87 cm
- ⚖ 0.42 kg
- ∅ 103 cm
- ⚙ AUTO O
- 👉 1
- ☔ YES
- 🌬 YES

WOOD CLASSIC S™

9063

A classic line, for those that love traditional wooden umbrellas.

- Subtle logo on pouch and canopy
- Solid shaft and frame
- Classic black colour and new check print
- Plastic handle on new check print



Black
1041



NEW

Check Dark Blue*
9877



108979

3 Sect. Auto O/C Short

☞ 27 cm

📦 0.3 kg

∅ 97 cm

🔧 AUTO O/C

📏 3

👤 YES

☔ YES

Wooden handle



*until stock depletion



108978
3 Sect. Auto O/C Crook

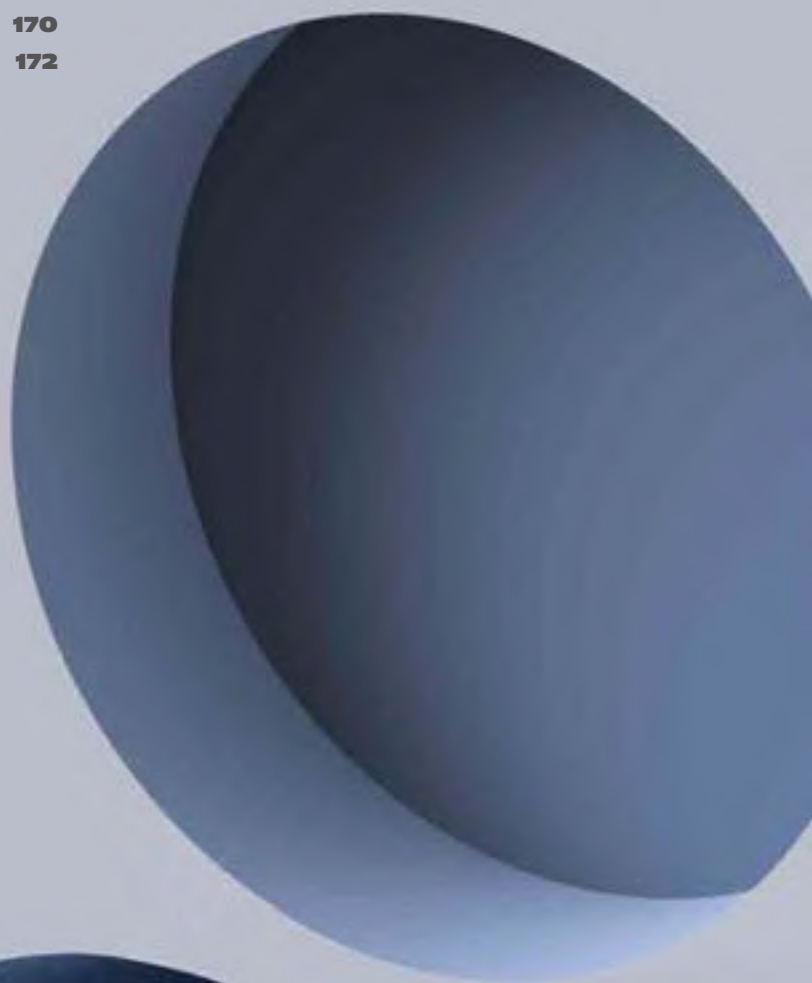
- 33 cm
- 0.35 kg
- AUTO O/C
- YES
- 3
- YES
- YES



108980
Stick Man Auto Open

- 97.5 cm
- 0.5 kg
- AUTO O
- YES
- 1
- YES

PACK-SIZED	NEW	164
GLOBAL TRAVEL ACCESSORIES		
- LUGGAGE ACCESSORIES		166
- PACKING ACCESSORIES		168
- COMFORT TRAVELLING		170
- ELECTRONIC ACCESSORIES		172



ACCESSORIES
ACCESSORIES
ACCESSORIES
ACCESSORIES
ACCESSORIES
ACCESSORIES
ACCESSORIES
ACCESSORIES
ACCESSORIES
ACCESSORIES
ACCESSORIES
ACCESSORIES
ACCESSORIES
ACCESSORIES
ACCESSORIES
ACCESSORIES
ACCESSORIES
ACCESSORIES
ACCESSORIES
ACCESSORIES
ACCESSORIES
ACCESSORIES
ACCESSORIES
ACCESSORIES
ACCESSORIES
ACCESSORIES

A new addition to our Travel accessories category. A set of 3 packing cubes that allows you to be extra organised when packing your bag for your next adventure!

- Available in four colours and three sizes: S/M/L. Different colour label according to size
- Lightweight & washable
- Fabric made from recycled PET bottles, part of our Recyclex™ Material Technology Initiative



Black
1041



Forest
1338



Navy
1596






Rose
1751





146885

Set of 3 packing cubes

	14 x 23 x 8
	22 x 23 x 8
	30 x 35 x 10



LUGGAGE ACCESSORIES

Engineered to make it easier to identify or to secure your luggage.

- Wide assortment of luggage straps and locks with TSA
- Luggage covers for extra suitcase protection
- Identify your luggage with one of our luggage tag



Black
1041



Midnight Blue
1549



Red
1726



Sunflower
2022



Pale Rose Pink
5266



121294
Key Lock TSA x 2



122290
Combilock 3 Dial TSA Light



121296
Cablelock 3 Dial TSA



121224
Foldable Luggage Cover M



121223
Foldable Luggage Cover L/M



121220
Foldable Luggage Cover XL



121264
Manual Scale



122291
Digital Luggage Scale



121312
Luggage Strap 50 mm



121307
**Rectangle Luggage Tag
x 2**



121313
**Luggage Strap/TSA
Lock**

PACKING ACCESSORIES

Keep your personal belongings safe with our pouches, belts and passport covers.

- All the items are well organised and functional
- Some items have RFID protection



Black
1041



Red
1726



Midnight Blue
1549



Translucent
1873



Eclipse Grey
2957



121267
Foldable Backpack



121266
Foldable Duffel



121265
Foldable Duffel XL



121362
Bottle Set Pack of 4



121374

RFID Money Belt



121373

Hanging Toiletry Kit

Toilet kit comes with transparent pouch



COMFORT TRAVELLING

With our Samsonite pillows and eyeshades, we try to maximize your comfort while taking a rest.

- Compression socks for long-haul flights
- Pillows to offer you the right neck support
- Eyeshades for a premium sleep while travelling



Black
1041



Midnight Blue
1549



Graphite
1374



121231

Inflatable Pillow



121234

Easy Inflatable Pillow

Our packaging have the FSC certificate





121240
Reversible Pillow



121241
Memory Foam Pillow



121244
**Memory Foam Pillow/
Pouch**



121250
Eye Mask and Earplugs

ELECTRONIC ACCESSORIES

Charge your electric devices through our Samsonite adaptors, that have all needed certifications.

- To charge all your electronic devices
- All items have the needed certifications



Black
1041



121532

**Worldwide Adapter +
USB**

C-LITE TOILET KIT
RESPARK TOILET KIT
COSMIX
STACKD TOILET KIT

NEW
174
176
178
180

TOILET KITS
TOILET KITS
TOILET KITS
TOILET KITS
TOILET KITS

TOILET KITS



C-LITE TOILET KIT™

C428

An elegant line of toilet kits to keep your products organised on trips away. Whatever you're packing, put it all into this chic line, the pearly effect of PU will allow you to travel in style.

- Feminine look enriched by pearly effect
- Elegant details
- Made of soft PU

MATCHES
C-LITE P. 12



Chili Red
1198



Midnight Blue
1549



Off White
1627



Elegant pullers



Samsonite swirl logo



Interior organisation





142674

Beauty Case



24 x 16 x 14



142675

Toilet Pouch



22 x 15 x 8.5



142676

Hanging Toilet Kit



26 x 18 x 15



RESPARK TOILET KIT™

NEW

D008

This toilet kit line is the perfect match with Respark, it stands out for durability and classic design. Even on a business trip or a leisure travel, it allows to keep the toiletries organized.

- Exterior fabric and interior lining made from recycled PET bottles, part of our Recyclex™ Material Technology Initiative
- Shiny nickel details
- Removable inner waterproof pouch

MATCHES

RESPARK P. 56



Forest Green
1339



Midnight Blue
1549



Ozone Black
7416



Metal pullers



Interior organisation



Samsonite metal plate logo





145864

Toilet Pouch



23 x 12 x 13



145865

Hanging Toilet Kit



25.5 x 11.5 x 18.5



145866

Weekender



26 x 15 x 11



A unisex line with mainstream design, tear-resistant fabric and lots of practical details.

- Polyester drill fabric made of 3 threads
- Outer material with water-repellent coating
- Shiny Nickel metal zippers



Black
1041



Black Iris
5953



Samsonite lettering logo



Metal pullers detail



Inner organisation for toiletries





85223

Cosmetic Pouch L



33 x 24 x 10



85222

Hanging Toilet Kit



26.5 x 18 x 11.5



85221

Hanging Toilet Organizer



21 x 23 x 10

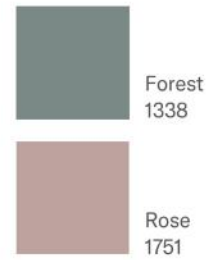
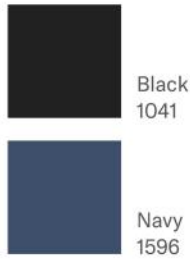


STACKD TOILET KIT™

C430

Born to be agender, Stackd Toilet kit, with its contemporary design and full interior organisation, will accompany you in every journey, from daily adventures to holidays.

- Agender design enriched by active details
- Made out of 50% RPET Polyester and 50% PU
- Embossed stripes print with Samsonite logo plate



MATCHES

STACKD P. 26 AND STACKD BIZ P. 108



Handy zipper pullers



PU bottom insert featuring an embossed stripes print



Detailed interior organisation





142788

Weekender



22 x 14 x 9



142789

Hanging Toilet Kit



24 x 17 x 10



142787

Toilet Pouch



26 x 15 x 11

ALU FIT		184
ATTACK 2 SLG		186
PRO-DLX 6 SLG	NEW	190
VEGGY SLG	NEW	194
FLAGGED SLG	NEW	196





LEATHER GOODS
LEATHER GOODS
LEATHER GOODS
LEATHER GOODS
LEATHER GOODS
LEATHER GOODS
LEATHER GOODS
LEATHER GOODS
LEATHER GOODS
LEATHER GOODS
LEATHER GOODS
LEATHER GOODS
LEATHER GOODS
LEATHER GOODS
LEATHER GOODS
LEATHER GOODS
LEATHER GOODS
LEATHER GOODS
LEATHER GOODS
LEATHER GOODS
LEATHER GOODS
LEATHER GOODS
LEATHER GOODS
LEATHER GOODS
LEATHER GOODS
LEATHER GOODS
LEATHER GOODS
LEATHER GOODS
LEATHER GOODS
LEATHER GOODS
LEATHER GOODS
LEATHER GOODS
LEATHER GOODS
LEATHER GOODS
LEATHER GOODS
LEATHER GOODS
LEATHER GOODS
LEATHER GOODS
LEATHER GOODS
LEATHER GOODS
LEATHER GOODS
LEATHER GOODS

Alu Fit is the innovative solution for storing, carrying and protecting all your cards.

- RFID and NFC protection
- Slim design
- Store up to 6 cards (flat) or up to 4 with embossed types



Black*
1041



Blue*
1090



Dark Brown*
1251



Red
1726



True Blue
1875



Aluminium
1004



Anthracite
1009



NEW

Orange*
1641



NEW

Climbing Ivy*
9199



RFID protection



Premium Leather finishing



Sliding button



*on selected items



Samsonite Alu Fit - ...



LEATHER GOODS



133888

**201 -
SLIDE-UP CASE**



6.4 x 10.2 x 1

RFID 1 € 6/4



133890

**202 -
SLIDE-UP WALLET**



6.6 x 10.2 x 2.1

RFID 1 € 6/4

Full Cowhide Small Leather Goods collection with traditional functionality and sporty look.

- Leather zipper pullers with metal button
- Shiny metal zippers
- RFID protection



Black
1041



Ebony Brown
1320



100 % Cowhide leather



Double stitching



Debossed Samsonite logo



NEW



127078
524-Z Round Key Pouch+2R
 11.6 x 7 x 1.5

NEW



140976
046 - B 6cc+VFL+2C+C
 10.5 x 8.5 x 1.5

NEW



144440
702 - 8CC H + Z COMP
 9 x 12.4 x 1

NEW



144442
722 - 8CC H S + 2 GUSS ZIP
 8 x 10.8 x 1

Full Cowhide Small Leather Goods collection with traditional functionality and sporty look.

- Leather zipper pullers with metal button
- Shiny metal zippers
- RFID protection

NEW





144446

047 - B
10CC+VFL+C+2C



13 x 9.6 x 1.5



2



10



6



NEW





144447

144 - W S
8CC+HFL+C+2C



9.5 x 10.6 x 2



2



8



1



NEW





144448

146 - W
12CC+HFL+2C+W



9.6 x 12.5 x 1.5



2



12



3

NEW





144451

147 - W
15CC+HFL+C+Z+2C



10.4 x 12.8 x 2



2



15



4



NEW





144453

049 - B S
9CC+VFL+2C+W



10.5 x 8.8 x 1.5



2



9



2



123997

**005 -
B 8 CC+2 C**



13 x 9.7 x 1

RFID 2 8 6



135052

**013 -
B 11CC+HFL+C+2C+W**



12.8 x 10 x 2

RFID 1 2 11 2



123999

**015 -
B 4CC+2C+C**



12.2 x 9.7 x 1.5

RFID 2 4 3



135059

**502 -
K Hanger 6 Hooks**



6 x 13 x 2

1 2



135058

**732 -
6CC H S**



7.6 x 10 x 0.5

1 6

The facelift of our core SLG line maintaining its bold and masculine design and anticipating the design of PRO-DLX 6 Business.

- RFID protection
- Featuring new and trendy models
- New shiny samsonite logo



Black
1041



144534
**005 -
B 8 CC+2 C**



13 x 9.7 x 1

RFID 2 8 6

Enriched with pattern on front



Recessed logo plate with shiny Samsonite logo



Red contrast color





144537
**047 -
 B 10CC+VFL+C+2C**



13 x 9.6 x 1

RFID 2 10 6



144538
**015 -
 B 4CC+2C+C**



12.2 x 9.7 x 1.5

RFID 2 4 3



144539
**046 -
 B 6CC+VFL+2C+C**



10.5 x 8.5 x 1.5

RFID 2 6 2



144540
**143 -
 W S 8CC+HFL+2C**



8.5 x 11.7 x 1

RFID 2 8 2



144541
**147 -
W 15CC+HFL+C+Z+2C**

10.4 x 12.8 x 1

RFID 2 15 4



144543
**524 -
Z Round Key Pouch+2R**

11.6 x 7 x 1



144544
**528 -
K Ring 2R**

8 x 2 x 1



144545
**722 -
8CC H S+2 GUSS ZIP**

8 x 10.8 x 1

RFID 8



144546

**727 -
All in One Wallet ZIP**



9 x 13 x 1

RFID 12



144547

**732 -
6CC H S**



7.6 x 10 x 0.5

RFID 6



144548

**048 -
B 9CC+ZC+C**



10 x 8.8 x 1

RFID 2 9



144549

**049 -
B S 9CC+VFL+2C+W**



10.5 x 8.8 x 1

RFID 2 9 2

Veggy is a full vegetable tanned leather line with a small touch of modernity thanks to the two orange stitches on the inside. The perfect combination between simple and sporty design, minimal but modern also thanks to the embossed oblique logo.

- RFID protection
- Sticking in contrast on the inside



Dark Brown
1251



144476
**005 -
B 8 CC+2 C**



13 x 9.7 x 1

RFID 2 8 6



144477
**047 -
B 10CC+VFL+C+2C**



13 x 9.6 x 1.5

RFID 2 10 6

Embossed Logo



Contrast details



Vegetal oiled leather line





144478

**015 -
B 4CC+2C+C**


12.2 x 9.7 x 1.5

RFID 2 € 4 3 ☞



144479

**046 -
B 6CC+VFL+2C+C**


10.5 x 8.5 x 1.5

RFID 2 € 6 2 ☞



144480

**144 -
W S 8CC+HFL+C+2C**


9.5 x 10.6 x 2

RFID 2 € 8 1 ☞



144481

**147 -
W 15CC+HFL+C+Z+2C**


10.4 x 12.8 x 2

RFID 2 € 15 4 ☞



144482

**524 -
Z Round Key Pouch+2R**


11.6 x 7 x 1.5



144483

**722 -
8CC H S+ 2 GUSS ZIP**


8 x 10.8 x 1

RFID 8 ☞



144484

**733 -
All in One Wallet S**


8.7 x 11.8 x 0.5

RFID 10 2 ☞



144485

**049 -
B S 9CC+VFL+2C+W**


10.5 x 8.8 x 1.5

RFID 2 € 9 2 ☞

Conceived for a younger consumer, the line is characterized by a color touch on the outside and a coloured lining on the inside adding value to the style and differentiating the line without being too bold.

- RFID protection
- Coloured detail on the outside dedicated colored fabric lining



Black
1041



Oxford Blue
1647



139943

**015 -
B 4CC+2C+C**



12 x 9.5 x 1.5

RFID 2 [€] 4 [€] 3 [€] [€]



139945

**001 -
B S 6CC+2C**



10.5 x 9 x 1

RFID 2 [€] 6 [€] 2 [€]

Debossed logo with coloured detail



Coloured lining



RFID protection





139951
**528 -
Key Ring 2R**

8 x 2 x 1



140977
**046 -
B 6CC+VFL+2C+C**

10.5 x 8.5 x 1.5

RFID 2 6 2



144467
**047 -
B 10CC+VFL+C+2C**

13 x 9.6 x 1

RFID 2 10 6



144468
**048 -
B 9CC+ZC+C**

10 x 8.8 x 1

RFID 1 1 9



144469
**144 -
W S 8CC+HFL+C+2C**

9.5 x 10.6 x 1.5

RFID 2 8 1



144470
**145 -
W 14CC+W+2C**

8.9 x 12.6 x 2

RFID 2 14 3

OVERVIEW

CABIN

HARDSIDE

40 x 55 x 20



LITE-BOX
SP 55



C-LITE
SP 55



MAGNUM ECO
SP 55

HARDSIDE

40 x 55 x 20 (≤ 23)



LITE-BOX ALU
SP 55



C-LITE
SP 55 EXP



C-LITE DISNEY
SP 55 EXP



PROXIS
SP 55 EXP



NEOPOD
SP 55 EXP SLIDE OUT
POUCH



NUON
SP 55 EXP



UPSCAPE
SP 55 EXP



STACKD
SP 55 EXP



STACKD DISNEY
SP 55 EXP DISNEY



STACKD DISNEY
SP 55 EXP MARVEL

HARDSIDE

35 x 55 x 23 (≤ 26)



PROXIS
SP 55 EXP

HARDSIDE

40 x 55 x 23 (≤ 27)



NEOPOD
SP55 EXP EASY ACCESS



STACKD
SP 55 EXP EASY ACCESS

OVERVIEW

CABIN

SOFTSIDE

40 x 55 x 20



SPECTROLITE 3.0 TRVL
SP 55



D'LITE
SP 55



RESPARK
SP 55 STRICT



CITYBEAT
UPR 55



CITYBEAT
SP 55 L 40CM



ECODIVER
DUFFLE/WH 55



ROADER
SP DUFFLE/WH
55 DF

SOFTSIDE

40 x 55 x 20 (≤ 25)



SPECTROLITE 3.0 TRVL
UPR 55 EXP



SPECTROLITE 3.0 TRVL
SP 55 EXP DF



D'LITE
UPR 55 EXP



D'LITE
SP 55 EXP



RESPARK
UPR 55 EXP



RESPARK
SP 55 DF EXP



ECODIVER
DUFFLE/WH55 BP



ECODIVER
SP DUFFLE 55

SOFTSIDE

35 x 55 x 20



CITYBEAT
SP 55 L35

SOFTSIDE

UNDERSEATERS



RESPARK
UPR 45 UNDERSEATER

OVERVIEW

CABIN

SOFTSIDE

OTHERS



ECODIVER
DUFFLE/WH 55
L35 DF



RESPARK
SP 55 L35 EXP



ROADER
DUFFLE/WH 55 L35



ROADER
LAPTOP BP/WH 55

SOFTSIDE

BACKPACKS



ECODIVER
TRAVEL BACKPACK S



ECODIVER
TRAVEL BACKPACK M



ROADER
TRAVEL BACKPACK S



ROADER
TRAVEL BACKPACK M



BIZZ2GO
BACKPACK 15.6"
DAYTRIP



BIZZ2GO
BACKPACK 17.3" EXP
OVERNIGHT



SECURIPAK
TRAVEL BACKPACK
15.6" EXP

OVERVIEW

DUFFLES - TOILET KITS

SOFTSIDE



SECURIPAK
DUFFLE/WH 55
L 35CM DF



ECODIVER
DUFFLE/WH 67



ECODIVER
DUFFLE/WH 79



ECODIVER
SP DUFFLE 79



ROADER
DUFFLE/WH 68



ROADER
DUFFLE/WH 79

DUFFLES ON WHEELS

SOFTSIDE



RESPARK
DUFFLE 55
OVERNIGHTER



RESPARK
DUFFLE 48
TWNIGHTER



ECODIVER
DUFFLE S



ECODIVER
DUFFLE M



ECODIVER
DUFFLE L

DUFFLES



ROADER
DUFFLE XS



ROADER
DUFFLE S

SOFTSIDE



ECODIVER
TOILET KIT



D'LITE
BEAUTY CASE

TOILET KITS

OVERVIEW

CABIN

HARDSIDE

40 x 55 x 20



LITE-CUBE DLX
SP 55



LITE-CUBE
SP 55



LITE-SHOCK
SP 55



S'CURE DLX
SP 55



S'CURE ECO
SP 55 POST CONSUMER



S'CURE ECO
SP 55



S'CURE
SP 55

HARDSIDE

40 x 55 x 20 (≤ 23)



HI-FI
SP 55 EXP

OVERVIEW

CABIN

SOFTSIDE

40 x 55 x 20



AIREA
SP 55 STRICT



POPSODA
UPR 55



POPSODA
SP 55 L 40CM



BASE BOOST
UPR 55 L 40 CM



BASE BOOST
SP 55

SOFTSIDE

40 x 55 x 20 (≤ 25)



PRO-DLX 5
SP 55 EXP



PRO-DLX 5
TRI-FOLD GARM. BAG



PRO-DLX 5
UPR 55 EXP

SOFTSIDE

40 x 55 x 20 (≤ 23)



AIREA
UPR 55 EXP
TOP POCKET



MIDTOWN
DUFFLE/WH 55 BP

SOFTSIDE

35 x 55 x 20 (≤ 25)



AIREA
SP 55 EXP L35



BASE BOOST
SP 55 L 35 CM

OVERVIEW

CABIN - DUFFLES

SOFTSIDE

OTHERS



PRO-DLX 5
BUSINESS CASE/
WH 15.6" EXP



PRO-DLX 5
ROLLING TOTE 15.6"



PRO-DLX 5
ROLLING TOTE 17.3"



PRO-DLX 5
LAPT. BP/WH 17.3"



XBR
BUSINESS CASE/
WH 15.6"



XBR
ROLLING TOTE 15.6"



VECTURA EVO
ROLLING TOTE 17.3"



LITEPOINT
LAPT. BP/WH 17.3"



MYSIGHT
LAPT. BP/WH 17.3"



MIDTOWN
LAPT. BACKPACK S



MIDTOWN
LAPT. BACKPACK M



MIDTOWN
LAPT. BACKPACKL EXP



GUARDIT 2.0
LAPT. BP/WH 15.6"



GUARDIT 2.0
ROLLING TOTE 17.3"



ZALIA 2.0
ROLLING TOTE 15.6"



AiREA
DUFFLE

SOFTSIDE

DUFFLES ON WHEELS



MIDTOWN
DUFFLE/WH 55



MIDTOWN
DUFFLE/WH 55 BP



MIDTOWN
DUFFLE/WH 79

OVERVIEW

BEAUTY CASES - TOILET KITS

SOFTSIDE

BEAUTY CASES



C-LITE TOILET KIT
BEAUTY CASE



STACKD TOILET KIT
WEEKENDER



RESPARK TOILET KIT
WEEKENDER



AIREA
BEAUTY CASE

SOFTSIDE

TOILET KITS



COSMIX
HANGING TOILET
ORGANIZER



COSMIX
COSMETIC POUCH L



COSMIX
HANGING TOILET KIT



C-LITE TOILET KIT
TOILET POUCH



C-LITE TOILET KIT
HANGING TOILET KIT



STACKD TOILET KIT
HANGING TOILET KIT



STACKD TOILET KIT
TOILET POUCH



RESPARK TOILET KIT
HANGING TOILET KIT



RESPARK TOILET KIT
TOILET POUCH





AIREA
TOILET KIT

AIRLINE CABIN LUGGAGE

MAXIMUM EXTERNAL DIMENSIONS and Weight allowed in Economy Class

	Airline	Max. dimensions	Max. weight		Airline	Max. dimensions	Max. weight
	Aegean Airlines	56 x 45 x 25 cm	8 kg		BMI Regional	55 x 40 x 23 cm	12 kg
	Aer Lingus	55 x 40 x 24 cm	10 kg		British Airways	56 x 45 x 25 cm	23 kg
	Aeroflot	55 x 40 x 25 cm	10 kg		Brussels Airlines	55 x 40 x 23 cm	8 kg
	Aerolineas Argentinas	55 x 35 x 25 cm (max. 115 cm)	Domestic: 8kg International: 10kg		Cathay Pacific	56 x 36 x 23 cm	7 kg
	Aeromexico	55 x 40 x 25 cm (max. 115 cm)	10 kg		Cebu Pacific	56 x 36 x 23 cm	7 kg
	Air Belgium	55 x 35 x 25 cm	10 kg		China Airlines	56 x 36 x 23 cm	7 kg
	Air Canada	55 x 40 x 23 cm	--		CityJet	47.5 x 35 x 20 cm	12 kg
	Air Caraïbes	55 x 40 x 20 cm (max. 115 cm)	12 kg		Condor	55 x 40 x 20 cm	8 kg
	Air Europa	55 x 35 x 25 cm (max. 115 cm)	10 kg		Corsair	55 x 40 x 23 cm	12 kg
	Air France	55 x 35 x 25 cm	12 kg		Czech Airlines	55 x 45 x 25 cm	8 kg
	Air India	55 x 35 x 25 cm (max. 115 cm)	8 kg		Delta Airlines	56 x 35 x 23 cm (max. 114 cm)	
	Air NUOVO Zealand	max. 118 cm	7 kg		easy Jet	56 x 45 x 25 cm	
	Air Transat	51 x 40 x 23 cm	10 kg		EL-AL Israel Airlines	56 x 45 x 25 cm (max. 115 cm)	8 kg
	Alitalia	55 x 35 x 25 cm	8 kg		Emirates	55 x 38 x 20 cm	7 kg
	All Nippon Airways	55 x 40 x 25 cm (max. 115 cm)	10 kg		Ethiopian Airlines	55 x 40 x 23 cm	7 kg
	American Airlines	56 x 36 x 23 cm			Etihad Airways	50 x 40 x 25 cm (max. 115 cm)	7 kg
	Arkia	55 x 40 x 20 cm	7 kg		Finnair	55 x 40 x 23 cm	8 kg
	Asiana Airlines	55 x 40 x 20 cm (max. 115 cm)	10 kg		Flybe	55 x 35 x 20 cm	10 kg
	Austrian Airlines	55 x 40 x 23 cm	8 kg		Germania	55 x 40 x 20 cm	6 kg

	Airline	Max. dimensions	Max. weight		Airline	Max. dimensions	Max. weight
	EUROWINGS	55 x 40 x 23 cm	8 kg		Ryanair	55 x 40 x 20 cm	10 kg
	HOP!	55 x 35 x 25 cm (max. 115 cm)	12 kg		Scandinavian Airlines	55 x 40 x 23 cm	8 kg
	Iberia	56 x 40 x 25 cm	10 kg		Singapore Airlines	max. 115 cm	7 kg
	Israir Airlines	50 x 40 x 20 cm	8 kg		South African Airways	56 x 36 x 23 cm	8 kg
	Japan Airlines	55 x 40 x 25 cm (max. 115 cm)	10 kg		Swiss International Airlines	55 x 40 x 23 cm	8 kg
	Jet Airways	55 x 35 x 25 cm (max. 115 cm)	7 kg		Tap Portugal	55 x 40 x 20 cm (max. 115 cm)	8 kg
	Jet2	56 x 45 x 25 cm	10 kg		Thai Airways	56 x 45 x 25 cm	7 kg
	KLM	55 x 35 x 25 cm	12 kg		Thomas Cook Airlines	55 x 40 x 20 cm	6 kg
	Korean Air	55 x 40 x 20 cm (max. 115 cm)	12 kg		Transavia	55 x 40 x 25 cm	10 kg
	LATAM Airlines	55 x 35 x 25 cm	10 kg		TUfly	55 x 40 x 20 cm	10 kg
	LOT	66 x 35 x 28 cm (max. 129 cm)	6 kg		Tunisair	max. 115 cm	8 kg
	Lufthansa	55 x 40 x 23 cm	8 kg		Turkish Airlines	55 x 40 x 23 cm	8 kg
	Malaysia Airlines	56 x 36 x 23 cm (max. 115 cm)	7 kg		United Airlines	56 x 36 x 23 cm (max. 115 cm)	
	Norwegian	55 x 40 x 23 cm	10 kg		Vietnam Airlines	56 x 36 x 23 cm (max 115 cm)	12 kg
	Olympic Air	55 x 40 x 23 cm	8 kg		Virgin Atlantic	56 x 36 x 23 cm	10 kg
	Philippine Airlines	56 x 36 x 23 cm max. 115 cm	7 kg		Vueling	55 x 40 x 20 cm	10 kg
	Qantas	56 x 36 x 23 cm (max. 115 cm)	10 kg		Wizz Air	55 x 40 x 23 cm	10 kg
	Qatar Airways	50 x 37 x 25 cm	7 kg		XL Airways	55 x 35 x 25 cm	5 kg

ICONS

	SIZE (L X H X W)		EASY ACCESS TICKET POCKET		MULTIWAY COMPRESS SYSTEM		TECH LOCKER™ INTERNAL ORGANISATION
	VOLUME		EASY PASS SYSTEM		MUSIC POCKET WITH HEADPHONE GATE		TO GO SIDE POCKET
	WEIGHT		ELASTIC LOOPS		NOTE COMPARTMENT		TRACKING SYSTEM
	ACCESSORY/CABLE POUCH		ERGONOMIC HANDLES		PACKING CUBES		TRANSPARENT PHONE POCKET
	ADAPTABLE LAPTOP COMPARTMENT		ERGONOMIC SHOULDER STRAPS WITH SHOCK ABSORBING SYSTEM	abc	PERSONALISATION OPTION		TSA LOCK 2 COMPARTMENTS
	ADJUSTABLE STERNUM AND WAIST STRAP		ERGONOMIC STRAPS		PERSONALISATION TAG		TWO DIVIDER PADS
	ANTI THEFT SECURITY ZIPPER		EXPANDABLE		POCKET FOR SHOES & LAUNDRY		TUCK AWAY HIPBELT & SHOULDER STRAPS
	ANTI-SLIP SHOULDER STRAP		FIX IT™ FLEXIBLE ORGANISATION		POCKET FOR SUNGLASSES		UNDERWEAR POUCH
	BACKREST WITH AIR CIRCULATION SYSTEM		FLOATING DIVIDER 1		POWER BANK ORGANISATION		USB PORT
	BADGE POCKET		FLOATING DIVIDER 2		QUICK ACCESS POCKET™		VERTICAL LAPTOP ADJUSTMENT SYSTEM
	BATTERY CHARGER		FOLDABLE WHEELS		RAIN COVER		VERTICAL STRAPS
	BAYONET CLOSING		FRONT & BACK POCKET		REFLECTIVE DETAILS		WATER RESISTANT
	BOTTLE HOLDER		FRONT POCKET		REINFORCED BLADE CUT RESISTANT POCKET		WATER RESISTANT LAPTOP COMPARTMENT
	BOTTOM GRIP		GARMENT BAG		REMOVABLE BAG/POCKET		WET POCKET
	BUTTERFLY STRAPS		HANGERS		REMOVABLE LAPTOP COMPARTMENT		WHEEL COVER
	CABIN LUGGAGE		HANGING LOOP/HOOK		REMOVABLE LAPTOP/TABLET SLEEVE		WIDER BOTTOM PROTECTION
	CABLE LOCK WITH TSA FUNCTION		HELMET FASTENING SYSTEM		REMOVABLE LINING		WINDOW
	C-SHAPE COMPARTMENT		HIDDEN EXPANDABILITY		REMOVABLE SHOULDER STRAP		WITH LAPTOP COMPARTMENT
	CHECKPOINT WET POCKET		HIDDEN EXPANDIBILITY ON SUITCASE		REMOVABLE WET POCKET		WITH TABLET COMPARTMENT
	COIN POCKET		HORIZONTAL STRAPS		RFID BLOCKING MATERIAL		ZIP COIN POCKET
	COMBI LOCK WITH TSA FUNCTION		ID TAG		SECURE		ZIPPER PULLER BLOCKER
	COMBI PADLOCK WITH TSA FUNCTION		IN HEIGHT ADJUSTABLE CROSS RIBBONS		SEE-THRU™ MESH POCKET		ZIPPER PULLER LOCKING LOOP
	COMBINATION LOCK		INTEGRATED LUGGAGE SCALE		SHIRT POCKET		ZIPPER PULLER SECURITY HOOK
	COMBINATION PADLOCK		INTEGRATED TOP POCKET		SHOCK ABSORBER SYSTEM		UMBRELLA: ANTI-WIND PROTECTION
	COMPARTMENT		INTEGRATED WHEELS		SUSPENSION / SHOCK ABSORBING WHEELS		UMBRELLA: CANOPY DIAMETER
	COMPRESSIBLE PACKING SOLUTION		INTERNAL ORGANISATION		SLIDE-OUT POUCH		UMBRELLA: LENGTH CLOSED
	COMPRESSION STRAPS		JEWELLERY POUCH		SMART FIT LAPTOP SYSTEM		UMBRELLA: NR OF STAGES
	COSMETIC POCKET		KEY HANGER/KEY FIX SYSTEM		SMART FIX BUCKLE		UMBRELLA: OPENING
	CRADLE POCKETS		KEY LOCK		SMART OPENING		UMBRELLA: WEIGHT
	CREDIT CARD SLOT		KEY PADLOCK WITH TSA FUNCTION		SMART SLEEVE/SMART POCKET WHICH QUICKLY SLIPS OVER THE HANDLE OF AN UPRIGHT OR SPINNER CASE		UMBRELLA: WIND TUNNEL TESTED
	CROSS RIBBONS		M RIBBONS		STAINLESS STEEL WIRE INTEGRATED INTO THE ADJUSTABLE STRAPS		
	DIVIDER PAD		MAGNETIC EARPHONES HOLDER		STERNUM STRAP		
	DOCUMENT HOLDER		MASK POUCH		STURDY WHEELS		
	DOUBLE BOTTLE HOLDER		MIRROR				

www.samsonite.com